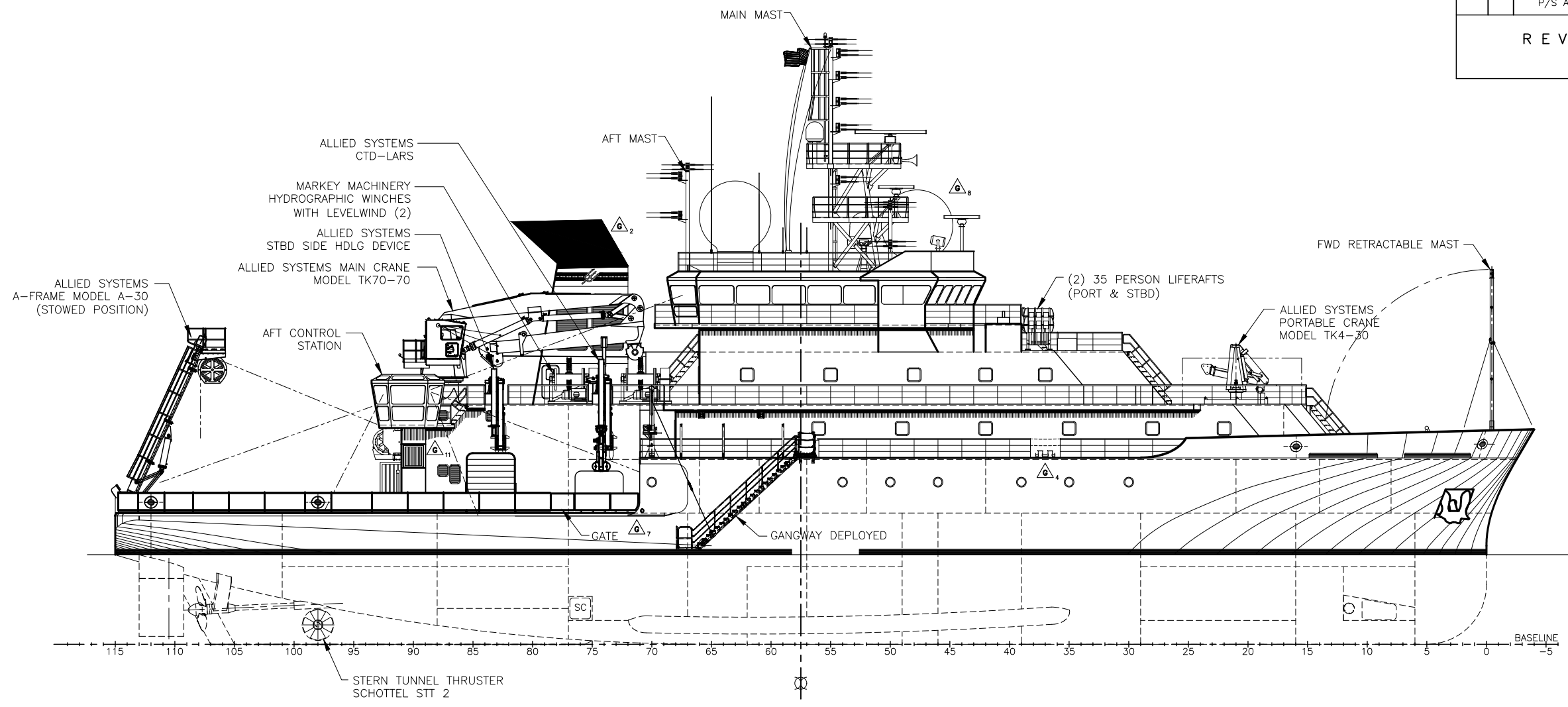


REVISIONS				
ZONE	REV.	DESCRIPTION	DATE	APPROVED
ALL	A	1. REVISED COMPARTMENT NAMES TO PROVIDE UNIQUE IDENTIFIERS. 2. RELOC PHSE CONSOLES TO SUIT PANAMA CANAL. RELOC COFFEE MESS TO SUIT STATUS BOARD. 3. REV TRASH/INCINERATOR RM. 4. DEL OFFICE, MNDK STBD. RELOC MESS HEAD TO PASSAGE STBD. 5. REV MESS SEATING. 6. IN SCULLERY, DEL SILVERWARE SINK AND POT SINKS. 7. FOCSLE DK FWD, REV LKR DOOR LOCATION 8. 1ST PLATF, REV MCHRY FLAT STBD. 9. HOLD & 1st PLATF, REV FO WING TK 1, DIAG BHD P/S AT BHD 29 FROM 9'-11" TO 9'-6" OCL.		

REVISIONS "B" CONT'D
ON SHEET 7

DISTRIBUTION STATEMENT A:
Approved for public release; distribution is unlimited.



BULKHEAD LEGEND	
	WATERTIGHT/A60 BHD
	NT STEEL BHD
	JOINER BHD

VESSEL CHARACTERISTICS
(APPROXIMATE)

LENGTH OVERALL = 238'-0"
 WATERLINE LENGTH = 230'-0"
 RULE LENGTH = 220'-9.6"
 MAXIMUM BREADTH (MOLDED) = 50'-0"
 DEPTH TO MNDK = 22'-0"
 DESIGN DRAFT = 15'-0"
 SCANTLING DRAFT = 17'-0"
 DESIGN SPEED = 12 KNOTS

VESSEL CAPACITIES
(APPROXIMATE)

FUEL OIL @ 98% = 147,066 GALS (INCL DAY TKS)
 FUEL OIL DAY TANKS @ 98% = 8,008 GALS
 FUEL OIL OVERFLOW TK @ 98% = 2,289 GALS
 POTABLE WATER @ 100% = 14,629 GALS
 BALLAST @ 100% = 92,417 GALS
 ANTI-ROLL TANK @100% = 7,917 GALS
 SEWAGE HOLDING @ 98% = 4,138 GALS
 GRAY WATER TK @ 98% = 11,955 GALS
 WASTE OIL TANK @ 98% = 5,163 GALS
 OILY BILGE TANK @ 98% = 5,494 GALS

R/V SALLY RIDE
AS-BUILT

DWG	TITLE
	REFERENCES
APPROVALS	
USCG	
ABS	
OWNER	
HULL NO.	DESIGNER
59	GUIDO PERLA & ASSOCIATES, Inc. 701 FIFTH AVENUE, SUITE 1200 SEATTLE, WA. 98104 U.S.A. Tel: (206) 768-1515 Fax: (206) 768-9700 Email: gpa@gpai.com
CAGE CODE	SHIPBUILDER
OW7U3	DAKOTA CREEK INDUSTRIES, Inc. 820 FOURTH STREET, P.O. BOX 218 ANACORTES, WA 98221 Tel: (360) 293-9575 Fax: (360) 293-6453
NAVESEA DWG. No.	PROJECT
8565942	OCEAN CLASS AGOR
ESWBS	TITLE
801-01	GENERAL ARRANGEMENT PROFILE
DWN	DATE
GTH	04/20/10
CC	DATE
04/20/10	
APVD	DATE
APVD	DATE
DWG No.	REV.
65411-801-01	G
SCALE	SHEET
3/32" = 1'-0"	1 OF 7

CALL CIRCUIT LEGEND	
ENGINEER CALL CIRCUITS	
A. CHIEF ENGINEER:	ENG DAY RM
B. FIRST ASSISTANT ENG:	SR FD-15
C. SECOND ASSISTANT ENG:	SR FD-3
D. THIRD ASSISTANT ENG:	SR FD-5
BNWAS CALL CIRCUITS	
A. CAPTAIN:	CAPT DAY RM
B. CHIEF MATE:	SR FD-2
C. SECOND MATE:	SR 01-1
D. THIRD MATE:	SR 01-3

PROPULSION: DIESEL ELECTRIC
 PROPULSION MOTORS: (2) SIEMENS AC MOTORS RATED FOR 876 kW EA @ 200 RPM
 MAIN GENERATORS: (4) CUMMINS QSK38-DM, PRIME RATED FOR 1,044 Bkw EA @ 1800 RPM
 EMERGENCY GENERATOR: (1) MTU SERIES 60, 210 KW @ 1800 RPM
 BOW THRUSTER: (1) WHITE GILL 40T3S MK.V-QR, RATED FOR 686 kW @ 677 RPM
 STERN THRUSTER: (1) SCHOTTEL STT 2 FP RATED FOR 620 kW @ 1470 RPM

CLASS NOTATION: ABS XA1, ©, XAMS, XACCU, NIBS, ICE CLASS DO, UWILD, OCEANOGRAPHIC RESEARCH VESSEL, UNRESTRICTED SERVICE

ACCOMMODATIONS: (20) SINGLE STATEROOMS = 20 PERSONNEL
 (11) DOUBLE STATEROOMS = 22 PERSONNEL
 (1) SINGLE HOSPITAL = 1 PERSONNEL
 (1) DOUBLE ACCESSIBLE W/PULLMAN = 3 PERSONNEL

44 PERSONS WITH SURGE CAPACITY TO 46 USING THE HOSPITAL AND THE FOLD DOWN BUNK IN THE ACCESSIBLE STATEROOM.

HALF SIZE
PRINT

PLOT DATE: Thursday July 27 2017
 PLOT TIME: 02:58:36 pm
 FILE: H:\2017\17002_SCRIPPS_SALLY_RIDE_PSA_MODS\PH\RECORD PLANS\801-01_GENERAL_ARRANGEMENT_REV_G.DWG
 DRG: SR_85411-801-01_GENERAL_ARRANGEMENT_REV_G.DWG
 FILE NAME: SR_85411-801-01_GENERAL_ARRANGEMENT_REV_G.DWG