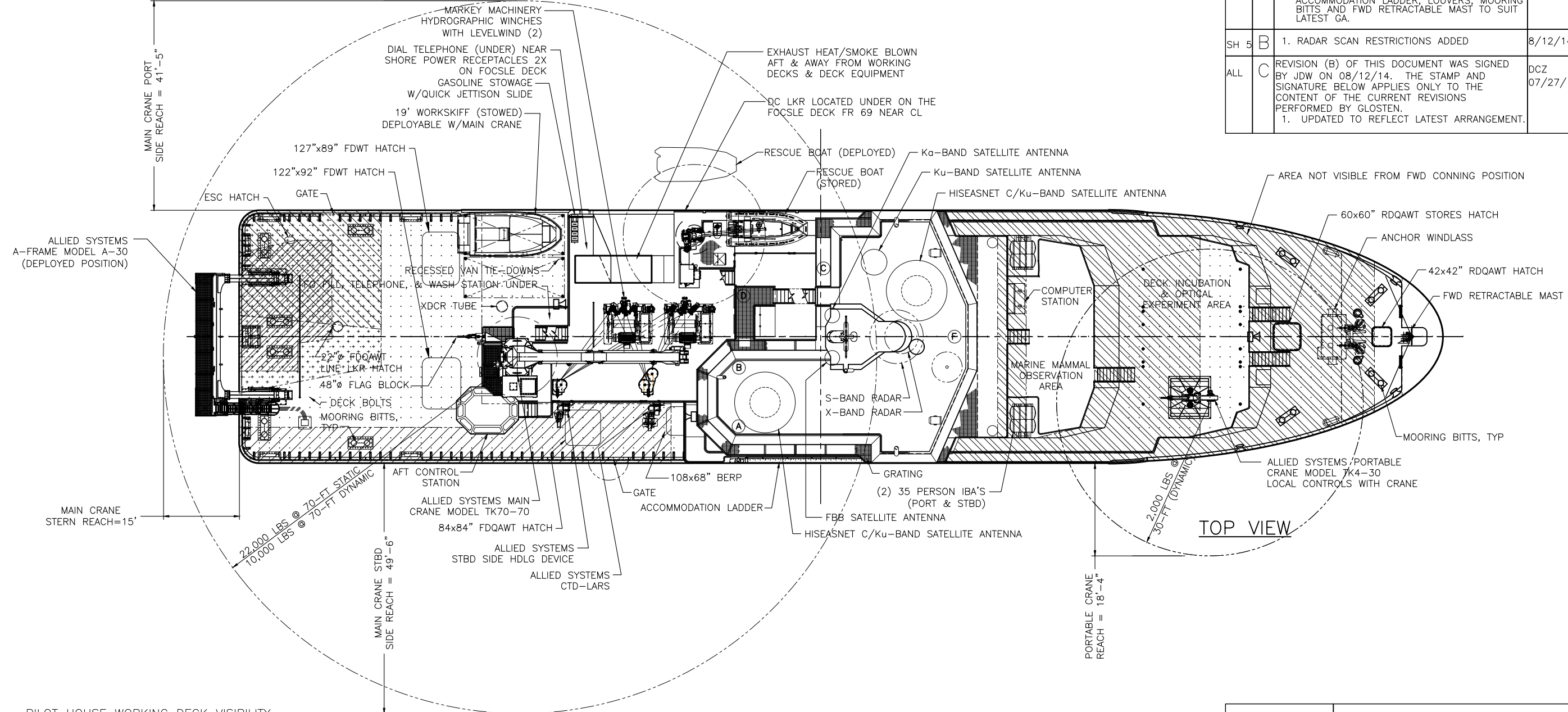


REVISIONS				
ZONE	REV.	DESCRIPTION	DATE	APPROVED
ALL	A	1. FDK, REV RB GATE FROM FR 64 TO STAN FR 63. 2. UPDATED MAIN MAST, NAV LIGHTS, PH WINGS, MAIN CRANE CONFIGURATION, A-FRAME, ROLLER DOORS, RESCUE BOAT PLATFORM ACCOMMODATION LADDER, LOUVERS, MOORING BITTS AND FWD RETRACTABLE MAST TO SUIT LATEST GA.	RF 11/05/13	DP
SH 5	B	1. RADAR SCAN RESTRICTIONS ADDED	8/12/14	JDW
ALL	C	REVISION (B) OF THIS DOCUMENT WAS SIGNED BY JDW ON 08/12/14. THE STAMP AND SIGNATURE BELOW APPLIES ONLY TO THE CONTENT OF THE CURRENT REVISIONS PERFORMED BY GLOSTEN. 1. UPDATED TO REFLECT LATEST ARRANGEMENT.	DCZ 07/27/17	GW



TOP VIEW

PILOT HOUSE WORKING DECK VISIBILITY

LOCATION	MN DK VISIBLE	% VISIBILITY
(A) AFTER PH 5'-3" ABOVE DECK	[Hatched Pattern]	90% VISIBILITY STBD SIDE WORKING DECK
(B) AFTER PH 5'-3" ABOVE DECK*	[Hatched Pattern]	33% VISIBILITY AFT WORKING DECK
(C) EXTERIOR PH 5'-3" ABOVE DECK*	[Hatched Pattern]	23% VISIBILITY AFT WORKING DECK
(D) EXTERIOR PH 5'-3" ABOVE DECK*	[Dotted Pattern]	50% VISIBILITY AFT WORKING DECK
(E) CCTV CAMERA UNDER AFT CONTROL STATION	[Dotted Pattern]	100% VISIBILITY AFT & STBD SIDE WORK'G DCK

NOTE: * WITHOUT 3RD VAN IN PLACE

FWD PILOT HOUSE VISIBILITY BLOCKAGE

LOCATION	AREA NOT VISIBLE
(F) FWD CONNING POSITION (29.5" AFT FR 43 & 70.9" ABOVE BRIDGE DECK)	[Hatched Pattern]

COMMUNICATION SYMBOLS LIST

- [Phone Icon] SOUND POWERED TELEPHONE
- [Phone Icon] DIAL TELEPHONE
- [Speaker Icon] PUBLIC ADDRESS SYSTEM SPEAKER

MISC. SYMBOLS LIST

- [Box Icon] DECK EQUIP. LOCAL CONTROL STN.
- [Box Icon] FUEL OIL FILL STATION
- [Box Icon] WASHDOWN STATION

R/V SALLY RIDE AS-BUILT

DISTRIBUTION STATEMENT A:
Approved for public release; distribution is unlimited.

2. 54308-171-01	MAST & FLAGSTAFF DWG
1. 54308-422-01	NAVIGATION LIGHTS
DWG	TITLE

REFERENCES

USCG	
ABS	
OWNER	
HULL NO. 59	DESIGNER GUIDO PERLA & ASSOCIATES, Inc. 701 FIFTH AVENUE, SUITE 1200 SEATTLE, WA 98104 U.S.A. Tel: (206) 768-1515 Fax: (206) 768-9700 Email: gpa@gpai.com
CAGE CODE OW7U3	SHIPBUILDER DAKOTA CREEK INDUSTRIES, Inc. 820 FOURTH STREET, P.O. BOX 218 ANACORTES, WA 98221 Tel: (360) 293-9575 Fax: (360) 293-6453
NAVSEA DWG. No. 8565943	PROJECT OCEAN CLASS AGOR
ESWBS 801-05	TITLE TOPSIDE ARRANGEMENT
DWN GTH DATE 11/01/10	DWG No. 65411-801-05
CKD - DATE -	SCALE 3/32" = 1'-0"
APVD - DATE -	SHEET: 1 OF 5
APVD - DATE -	

HALF SIZE PRINT

PLOT DATE: Thursday July 27 2017
 PLOT TIME: 02:50:03 pm
 C:\USERS\GWA\APPDATA\LOCAL TEMP\ACRPUBLISH_5020\FILE DIR: SR_65411-801-05_TOPSIDE_ARRANGEMENT_REV_C.DWG
 FILE NAME: SR_65411-801-05_TOPSIDE_ARRANGEMENT_REV_C.DWG