

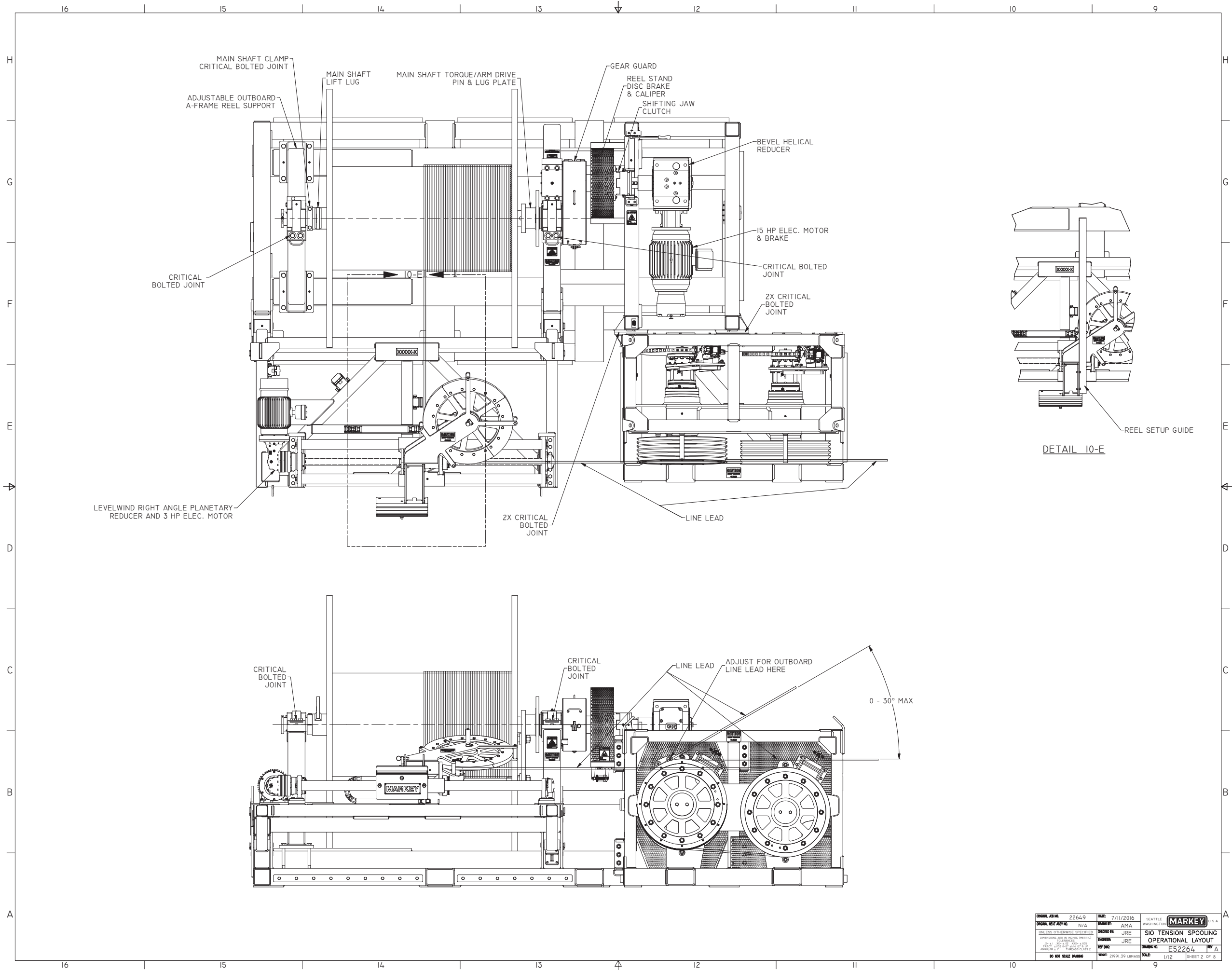
ITEM	REQD	PART NUMBER	DESCRIPTION	SIZE	REMARKS	WEIGHT
1		E52232	ASSEMBLY, SPOOLING TENSIONER		SEE D44432 FOR TENSIONER BRAKE CONTROL COMPONENTS	5902.3
2	1	E52230	ASSEMBLY, SPOOLING REEL STAND		SEE D44439 FOR REEL STAND BRAKE CONTROL COMPONENTS	10388.4
3	1	D44453	POWER/CONTROL CONTAINER ASSY			3717.9
4	12	E52264-04	NTHX-GR8-1.000 NC		HEX NUT	0.3
5	12	E52264-05	SHC-GR8-1.000 NC X 2.750 LG		HEX CAP SCREW	0.9
6	1	D44350	LEVEL WIND ASSEMBLY			2625.9
7	1	B29475	WHEEL LIFT BRACKET			7.2
8	1	E52264-08	BARA-6IT6-3.000 X 3.000 X 0.250	78.000 LG	ANGLE BAR	11.0
9	-					
10	4	E52264-10	SHC-SS-0.500 NC X 1.250 LG		HEX CAP SCREW	0.1

WARNING!

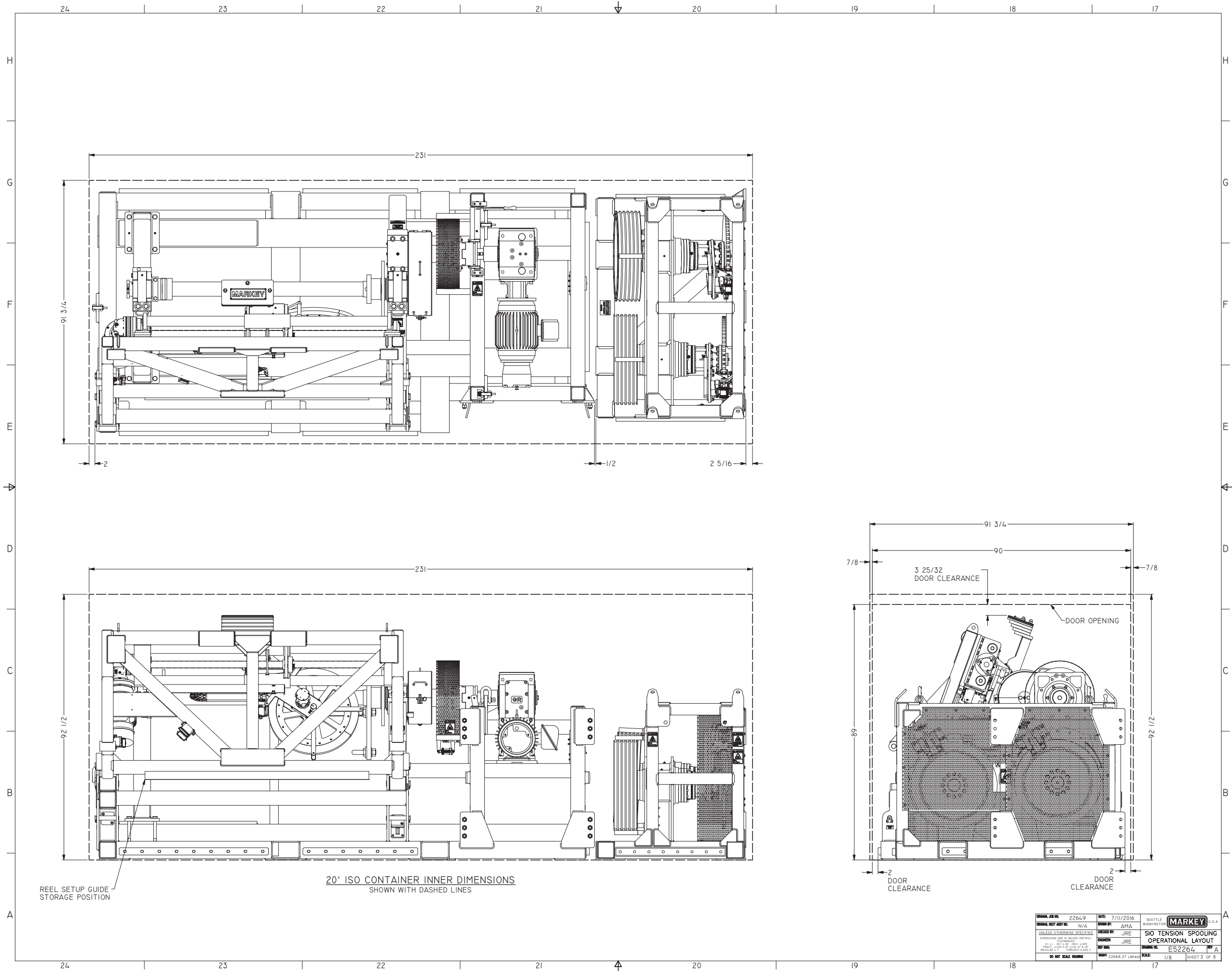
All spooling & winching operations have inherent risks. Therefore, the safe operation of this product is dependent upon the operator's skill, knowledge and judgment. To avoid hazardous situations, operators must be familiar with all operating guidelines, safety codes, and regulations related to rigging, wire rope, cable and winch usage. MARKEY's spooling equipment is not to be used to lift, support, or otherwise transport people, or loads over people.

OPERATIONAL LAYOUT

REV		DESCRIPTION	BY	DATE	JOB	<small>THIS DRAWING IS THE PROPERTY OF MARKEY TECHNOLOGY COMPANY, INC. AND IS UNCLASSIFIED UNLESS OTHERWISE SPECIFIED. IT IS TO BE USED ONLY FOR THE PROJECT AND FOR THE SPECIFIC PARTS LISTED THEREIN. ANY REUSE OR MODIFICATION OF THIS DRAWING WITHOUT THE WRITTEN PERMISSION OF MARKEY TECHNOLOGY COMPANY, INC. IS STRICTLY PROHIBITED. TO THE EXTENT PERMITTED BY LAW, MARKEY TECHNOLOGY COMPANY, INC. DISCLAIMS ANY LIABILITY FOR DAMAGES, INCLUDING CONSEQUENTIAL DAMAGES, ARISING FROM THE USE OF THIS DRAWING.</small>		<small>UNLESS OTHERWISE SPECIFIED, DIMENSIONS ARE IN INCHES (PARENS) UNLESS OTHERWISE SPECIFIED.</small>	<small>SCALE: 1/12</small>	<small>DATE: 7/11/2016</small>	<small>QUANTITY REQ'D: N/A</small>	<small>RELEASE DATE:</small>	
A		REMOVED ITEM 9, ITEM 10 QTY 4, VARIOUS UPDATES	JRE	12-21-16	22649	<small>DO NOT SCALE DRAWING</small>		<small>22649</small>	<small>22649</small>	<small>7/11/2016</small>	<small>N/A</small>	<small>RELEASE DATE:</small>	
<small>REVISION HISTORY</small>						<small>OPERATIONAL LAYOUT</small>		<small>SCALE: 1/12</small>		<small>DATE: 7/11/2016</small>		<small>QUANTITY REQ'D: N/A</small>	<small>RELEASE DATE:</small>
<small>REVISION HISTORY</small>						<small>OPERATIONAL LAYOUT</small>		<small>SCALE: 1/12</small>		<small>DATE: 7/11/2016</small>		<small>QUANTITY REQ'D: N/A</small>	<small>RELEASE DATE:</small>



PROJECT NO.	22649	DATE	7/11/2016	SEATTLE, WASHINGTON	MARKEY U.S.A.
ORIGINAL NEXT ASSY NO.	N/A	DRAWN BY	AMA	DESIGNED BY	JRE
UNLESS OTHERWISE SPECIFIED:		ENGINEER	JRE	SIO TENSION SPOOLING OPERATIONAL LAYOUT	
DIMENSIONS ARE IN INCHES (PARENS)		REV	01	DATE	07/11/2016
TOLERANCES UNLESS OTHERWISE SPECIFIED:		DESIGNED BY	JRE	PROJECT NO.	E52264
FRACTIONS 1/16" TO 1/8" DECIMALS .001" TO .015"		SCALE	1/12	SHEET NO.	2 OF 8
HOLE DIMENSIONS UNLESS OTHERWISE SPECIFIED:		SCALE	1/12	SHEET 2 OF 8	
FRACTIONS 1/16" TO 1/8" DECIMALS .001" TO .015"		DO NOT SCALE DRAWING			



20' ISO CONTAINER INNER DIMENSIONS
SHOWN WITH DASHED LINES

REEL SETUP GUIDE
STORAGE POSITION

ORIGINAL JOB NO.	22649	DATE	7/11/2016	SEATTLE, WASHINGTON
ORIGINAL PART AND NO.	N/A	DRAWN BY	AMA	MARKEY U.S.A.
UNLESS OTHERWISE SPECIFIED		CHECKED BY	JRE	SIO TENSION SPOOLING
CONFORMS TO ASME Y14.5-2009		DESIGNED BY	JRE	OPERATIONAL LAYOUT
PROJECT: 22649 - 20' ISO CONTAINER		REVISED BY	JRE	DRAWING NO. E52264
PROJECT: 22649 - 20' ISO CONTAINER		DATE	7/11/2016	SCALE 1/8"
PROJECT: 22649 - 20' ISO CONTAINER		SCALE	1/8"	SHEET 3 OF 8

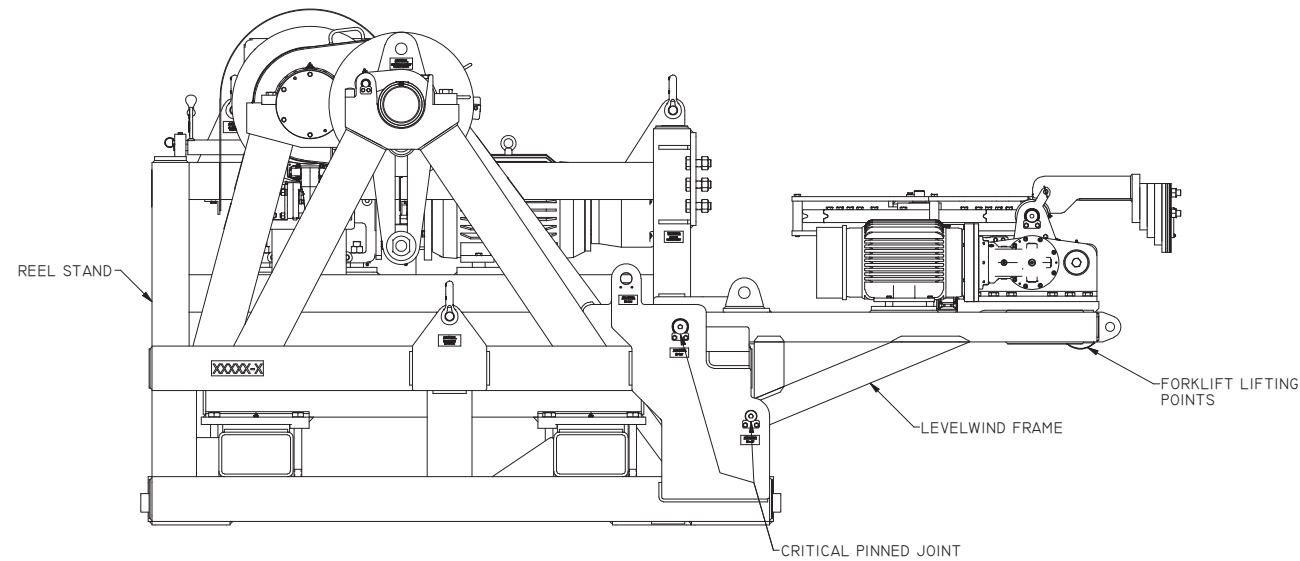
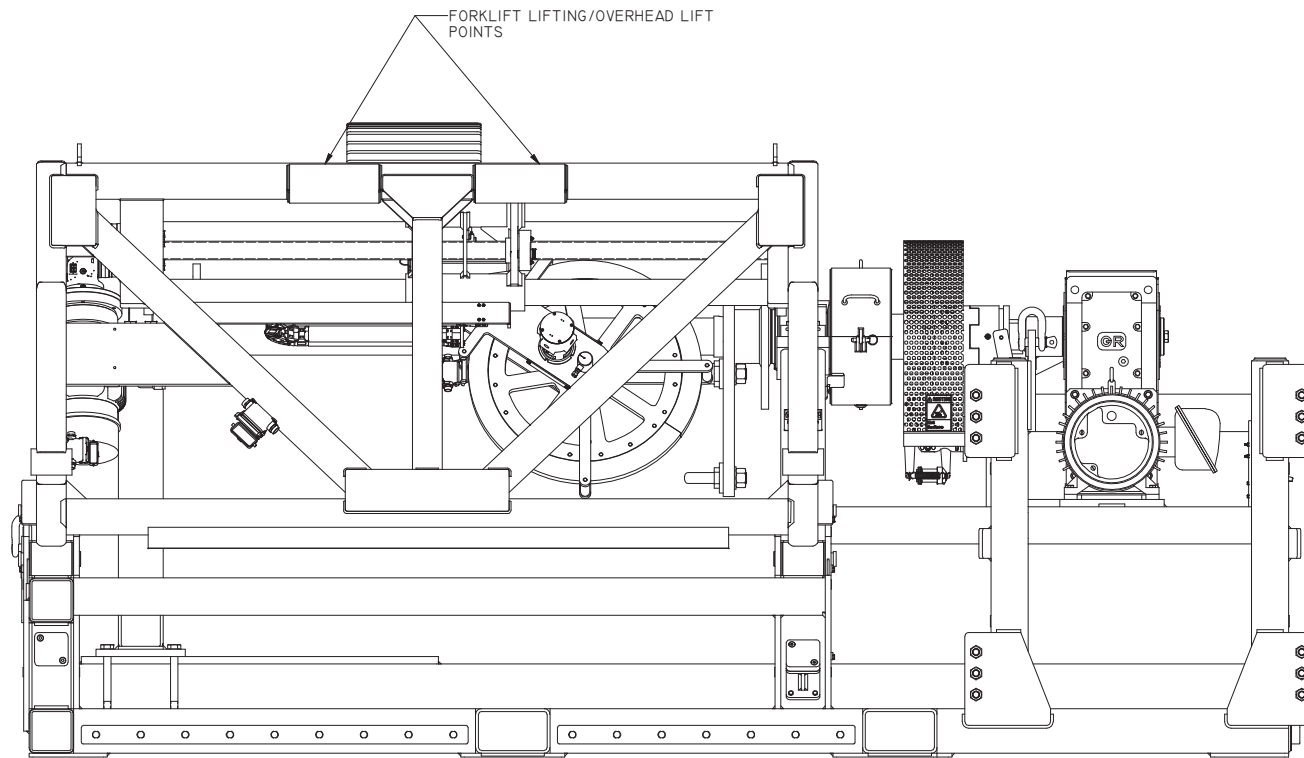
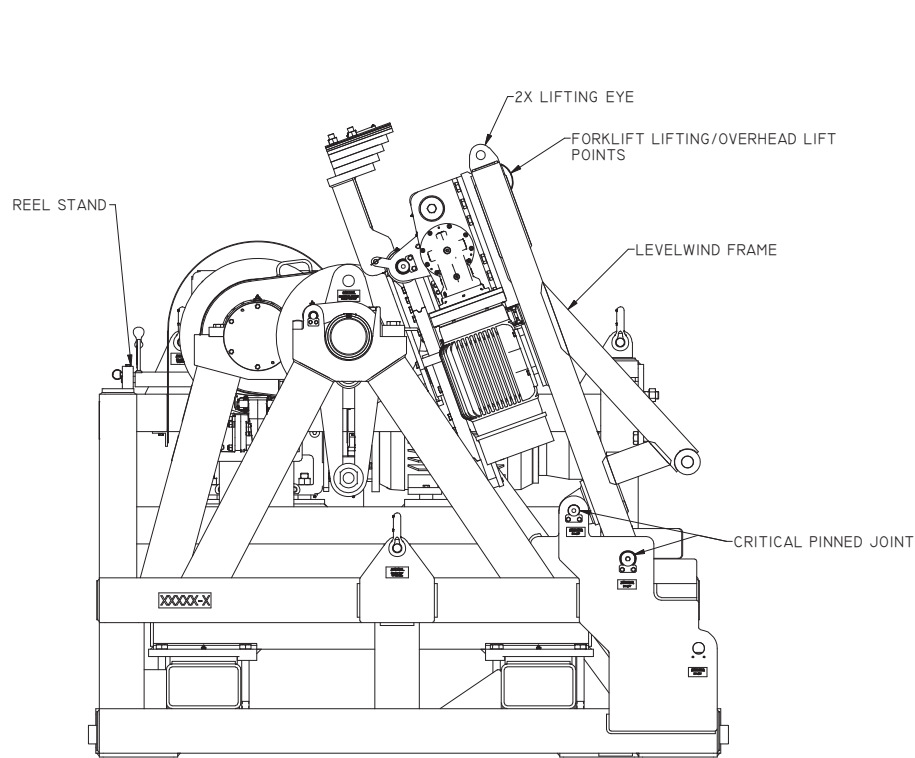


LIFT LEVELWIND FRAME FROM FORKLIFT LIFTING POINTS, LIFTING EYE OR FRAME TUBE.
DO NOT LIFT WITH LEVELWIND HEAD OR BARS.
DO NOT ALLOW LEVELWIND FRAME TO DROP.

CAUTION !
THIS DRAWING FOR INFORMATIONAL PURPOSES ONLY.
PLEASE REFER TO INDUSTRY STANDARDS FOR LIFTING AND RIGGING
GUIDELINES. MARKEY MACHINERY DOES NOT ADVISE REGARDING
LIFTING AND RIGGING.

H
G
F
E
D
C
B
A

H
G
F
E
D
C
B
A



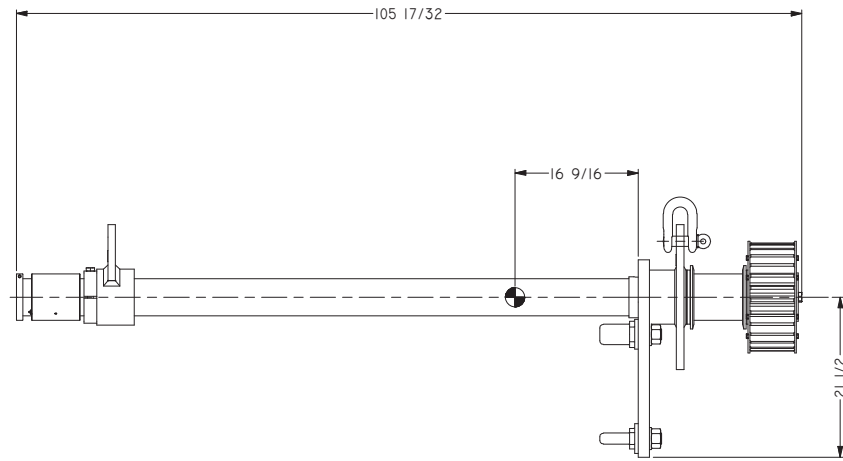
ORIGINAL JOB NO.	22649	DATE	7/11/2016	SEATTLE, WASHINGTON	MARKEY U.S.A.
ORIGINAL PART AND NO.	N/A	DRAWN BY	AMA		
UNLESS OTHERWISE SPECIFIED, DIMENSIONS ARE IN INCHES (PARENS)				DRAWN BY	JRE
SCALE: 1/8" = 1'-0" (SEE PART 1100)				DATE	JRE
PART: 1100 (SEE PART 1100)				REV. NO.	E52264
DRAWING CLASS: 2				WEIGHT	22668.27 LB(KGS)
DO NOT SCALE DRAWING				SCALE	1/8" = 1'-0"
				SHEET	4 OF 8

REEL STAND REEL LIFTING

MAXIMUM REEL WEIGHT $W = 25,000$ LBS*
 *IN ADDITION TO WEIGHT OF MAIN SHAFT AND
 MAIN SHAFT COMPONENTS (1,150 LBS)

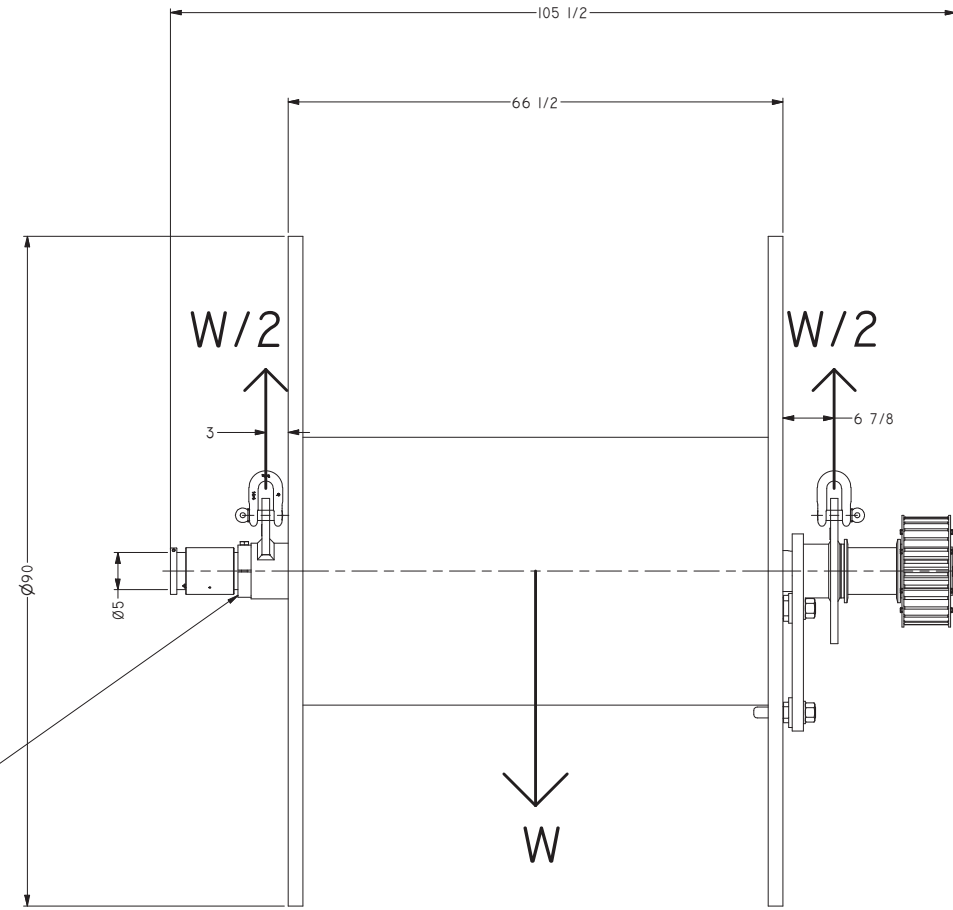
CAUTION !

THIS DRAWING FOR INFORMATIONAL PURPOSES ONLY.
 PLEASE REFER TO INDUSTRY STANDARDS FOR LIFTING AND RIGGING
 GUIDELINES. MARKEY MACHINERY DOES NOT ADVISE REGARDING
 LIFTING AND RIGGING.



MAIN SHAFT & MAIN SHAFT COMPONENTS

ALWAYS USE MAIN SHAFT CLAMP
 TO SECURE THE MAIN SHAFT LIFT
 LUG NEXT TO THE REEL WHEN LIFTING



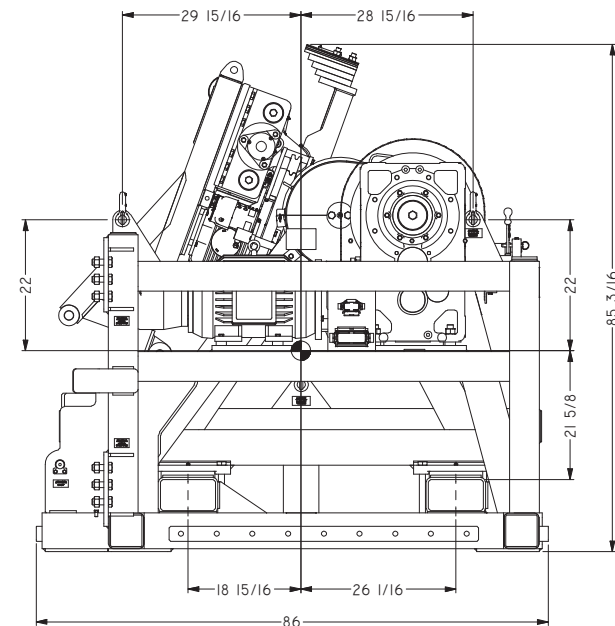
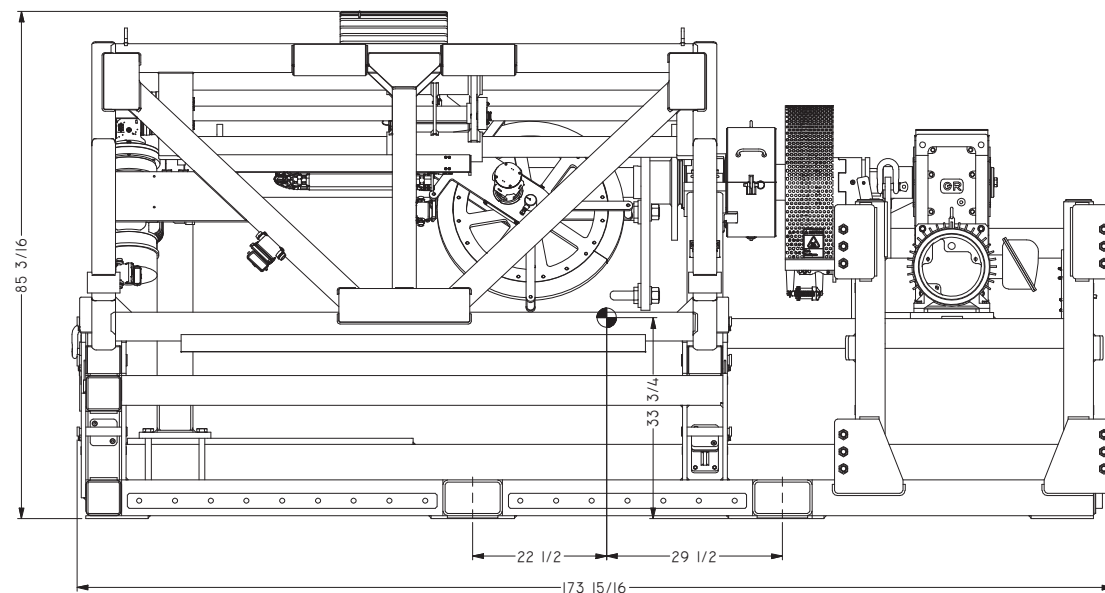
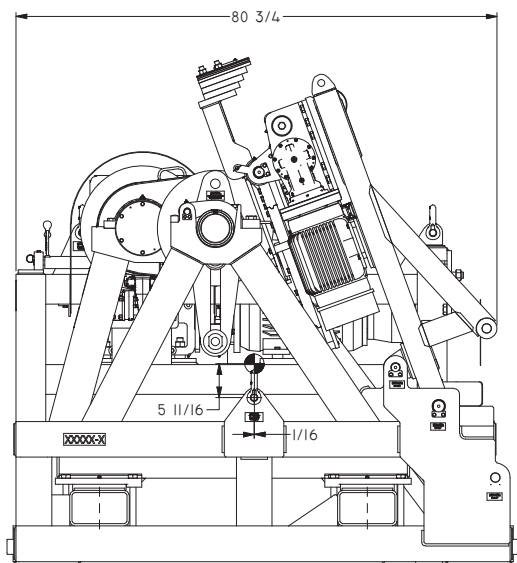
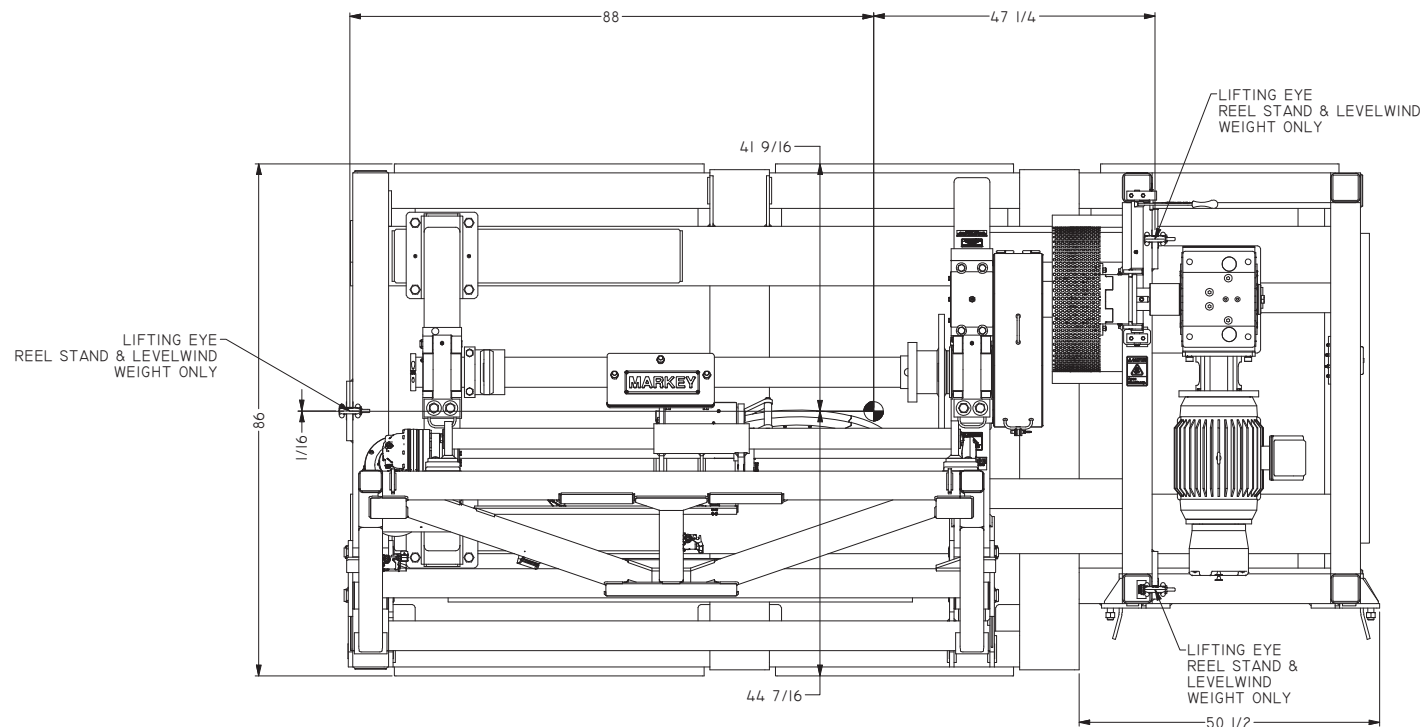
ORIGINAL JOB NO.	22649	DATE	7/11/2016	SEATTLE, WASHINGTON	MARKEY U.S.A.
ORIGINAL PART NO.	N/A	DRAWN BY	AMA		
UNLESS OTHERWISE SPECIFIED, DIMENSIONS ARE IN INCHES (FRAC) DECIMALS ARE TO 3 DECIMALS		CHECKED BY	JRE	SIO TENSION SPOOLING OPERATIONAL LAYOUT	
AS A 1. 2ND EDITION 11/11/16		DESIGNED BY	JRE	SCALE	E52264
PROJECT: 22649 - 11/11/16		REV. NO.		SCALE	1/8
REVISIONS		DATE		SCALE	1/8
DO NOT SCALE DRAWING		WEIGHT	21991.39 LBS (KGS)	SHEET 5	OF 8



DO NOT LIFT THE REEL STAND & LEVELWIND WITH THE LEVELWIND THE IN DEPLOYED POSITION.

DO NOT LIFT THE REEL STAND & LEVELWIND WITH A REEL ON THE MAIN SHAFT

CAUTION !
THIS DRAWING FOR INFORMATIONAL PURPOSES ONLY.
PLEASE REFER TO INDUSTRY STANDARDS FOR LIFTING AND RIGGING GUIDELINES. MARKEY MACHINERY DOES NOT ADVISE REGARDING LIFTING AND RIGGING.



LEVELWIND AND SPOOLING REEL STAND
APPROX. WEIGHT: 12,760 LBS

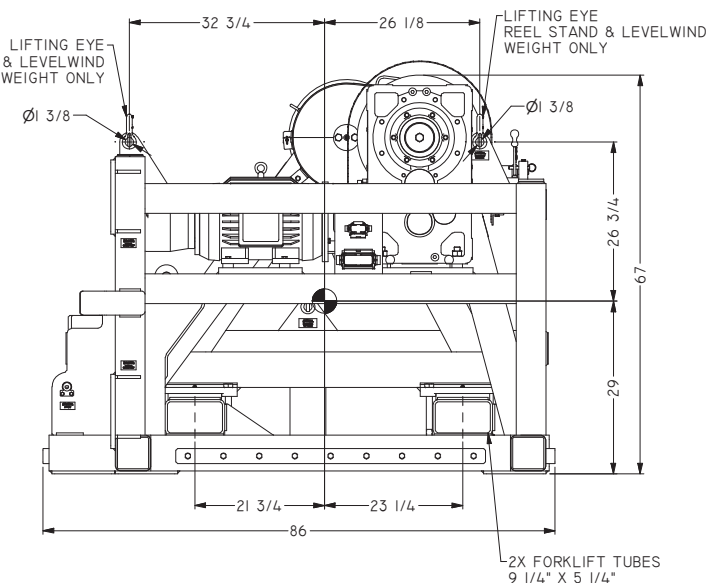
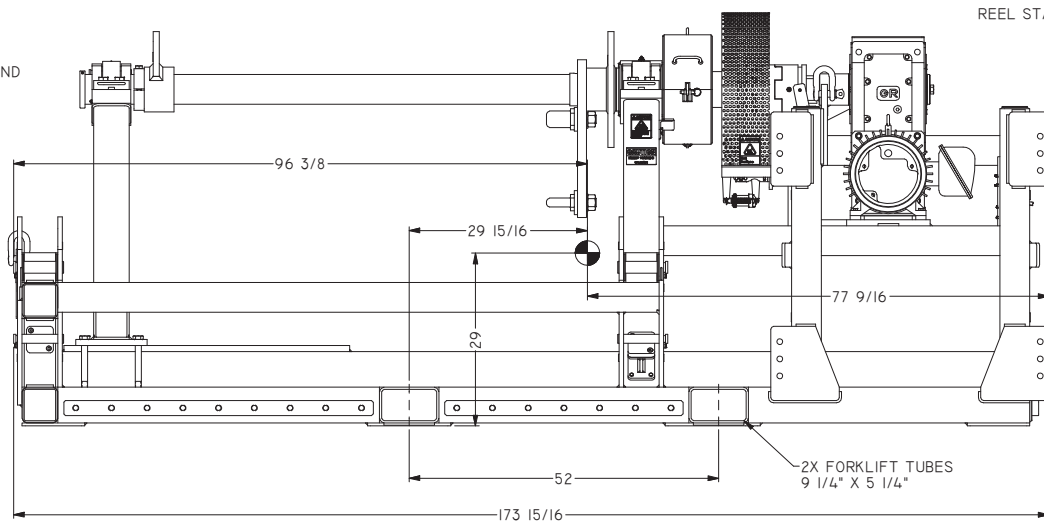
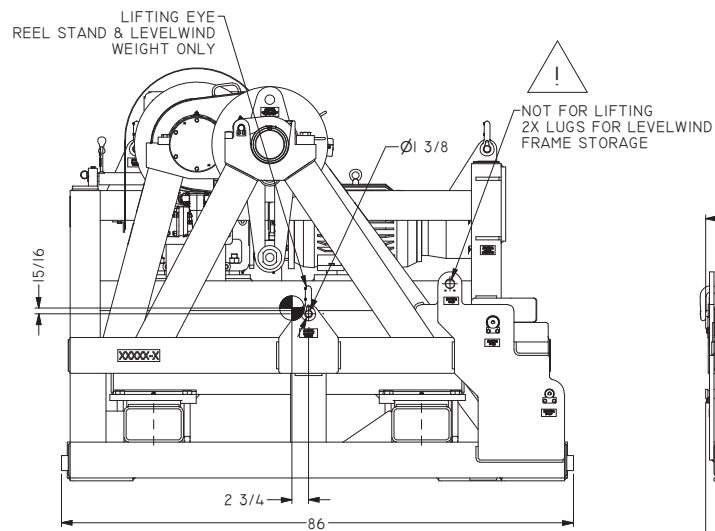
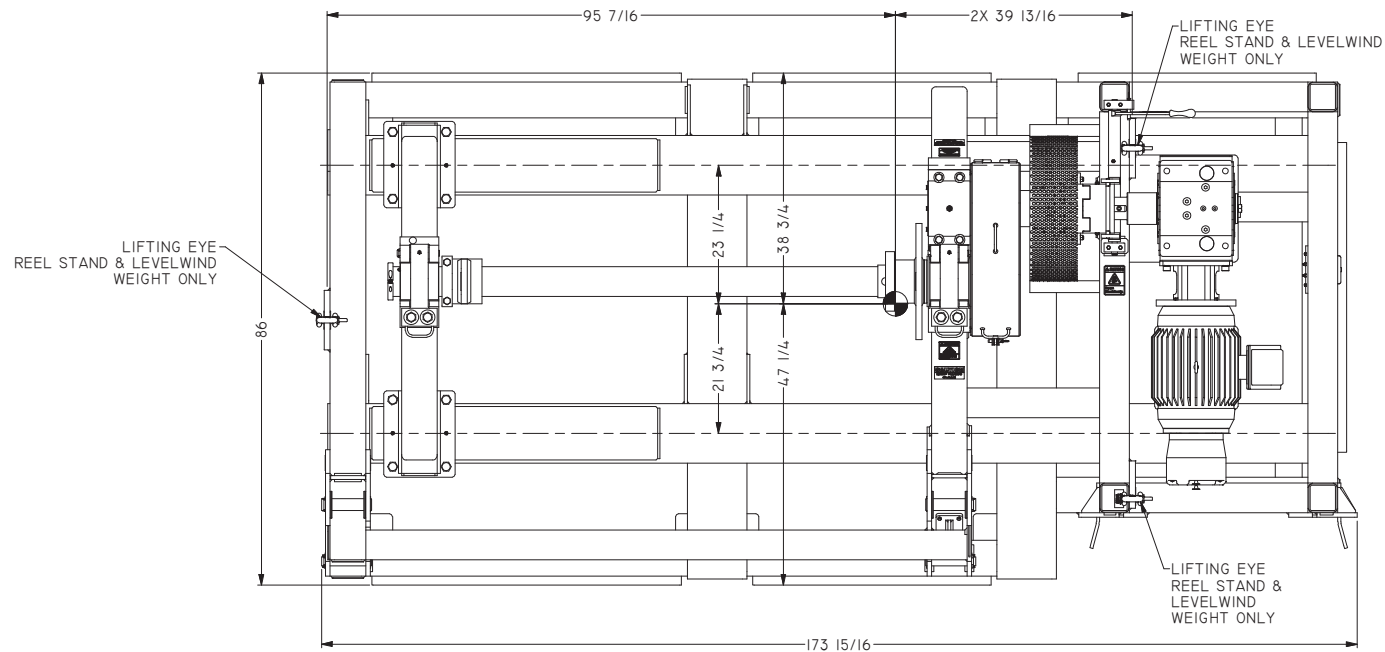
ORIGINAL JOB NO.	22649	DATE	7/11/2016	SEATTLE, WASHINGTON
ORIGINAL PART NO.	N/A	DRAWN BY	AMA	MARKEY U.S.A.
DESIGNED BY	JRE	CHECKED BY	JRE	SIO TENSION SPOOLING OPERATIONAL LAYOUT
SCALE	E52264	DATE	7/11/2016	REV. 1
DO NOT SCALE DRAWING	FORM: 22668-27 (LBR)	SCALE	1/10	SHEET 6 OF 8



REEL STAND NOT BE BE LIFTED WITH REEL ON MAIN SHAFT

CAUTION !

THIS DRAWING FOR INFORMATIONAL PURPOSES ONLY. PLEASE REFER TO INDUSTRY STANDARDS FOR LIFTING AND RIGGING GUIDELINES. MARKEY MACHINERY DOES NOT ADVISE REGARDING LIFTING AND RIGGING.

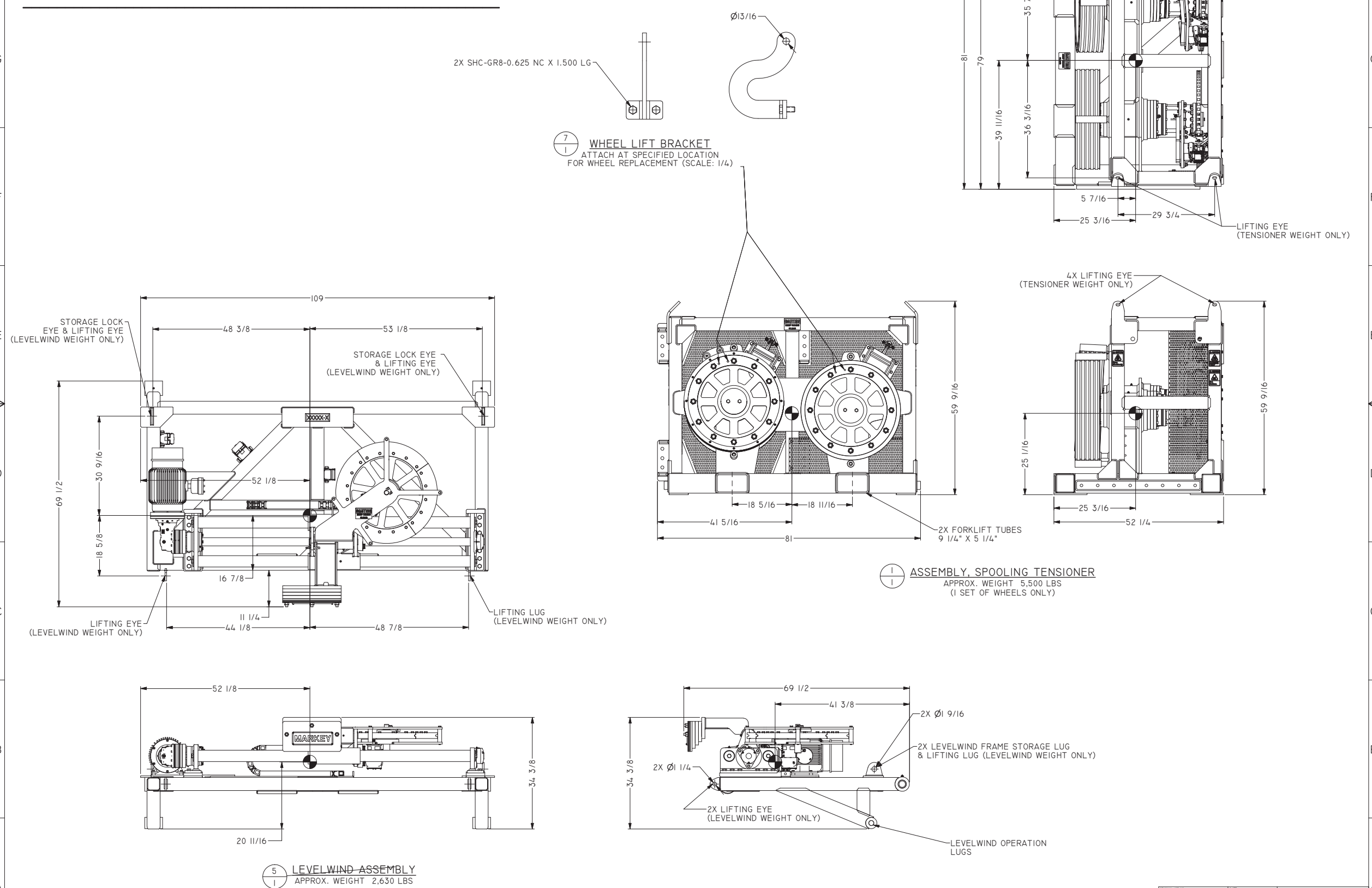


ASSEMBLY, SPOOLING REEL STAND
APPROX. WEIGHT: 10,500 Lbs

DESIGN JOB NO.	22649	DATE	7/11/2016	SEATTLE, WASHINGTON	MARKEY U.S.A.
DESIGN PART NO.	N/A	DRAWN BY	AMA		
UNLESS OTHERWISE SPECIFIED		CHECKED BY	JRE	SIO TENSION SPOOLING OPERATIONAL LAYOUT	
CONFORMING TO ASME B31.1 (STEEL PIPE)		DESIGNED BY	JRE	DRAWN BY	
ASME B31.3 (PIPE, HANGAR, ETC.)		REVISED BY		SCALE	
ASME B31.9 (TANKS CLASS 2)		DATE	2/19/11	E52264	
DO NOT SCALE DRAWING		WEIGHT	21991.39 LBS(AS)	SCALE	1/10
				SHEET 7 OF 8	

CAUTION !

THIS DRAWING FOR INFORMATIONAL PURPOSES ONLY. PLEASE REFER TO INDUSTRY STANDARDS FOR LIFTING AND RIGGING GUIDELINES. MARKEY MACHINERY DOES NOT ADVISE REGARDING LIFTING AND RIGGING.



ORIGINAL JOB NO.	22649	DATE	7/11/2016	SEATTLE, WASHINGTON	MARKEY U.S.A.
ORIGINAL PART NO.	N/A	DRAWN BY	AMA	CHECKED BY	JRE
UNLESS OTHERWISE SPECIFIED, DIMENSIONS ARE IN INCHES (FRACTIONS)			DESIGNED BY	JRE	SIO TENSION SPOOLING OPERATIONAL LAYOUT
SCALE: 1/10			REVISED BY	JRE	DRAWING NO. E52264
DO NOT SCALE DRAWING			WORK NO.	22668.27 (RHS)	SCALE: 1/10 SHEET 8 OF 8