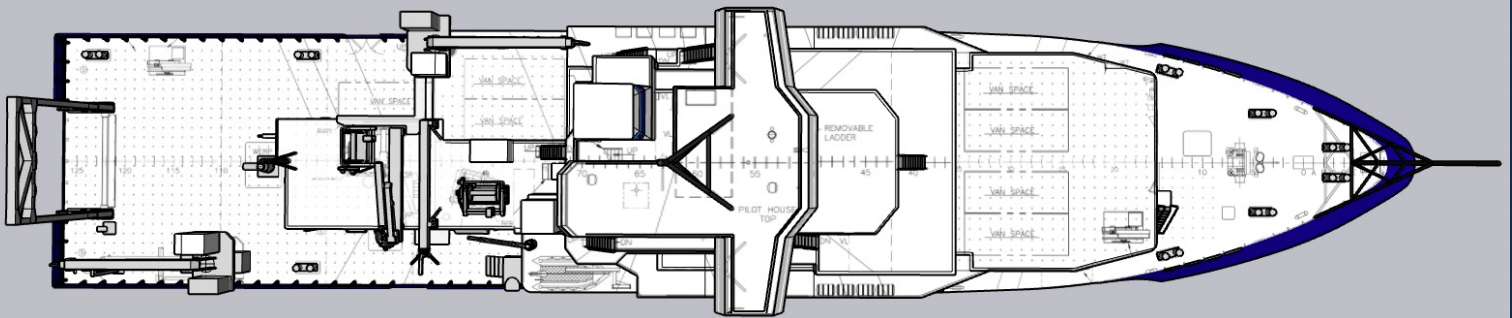
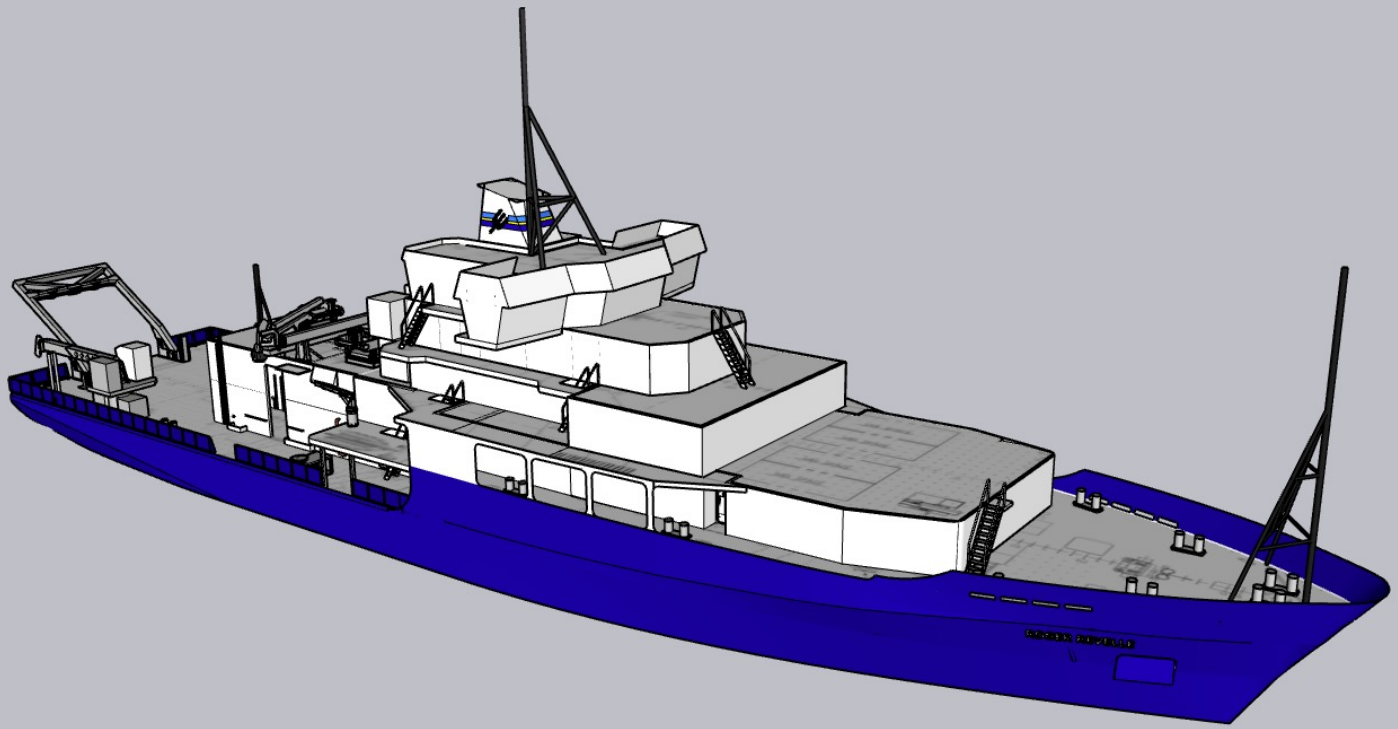


R/V ROGER REVELLE DECK AND LAB SPACES

Shipboard Technical Support
ResTech@ucsd.edu
(858) 534-1632



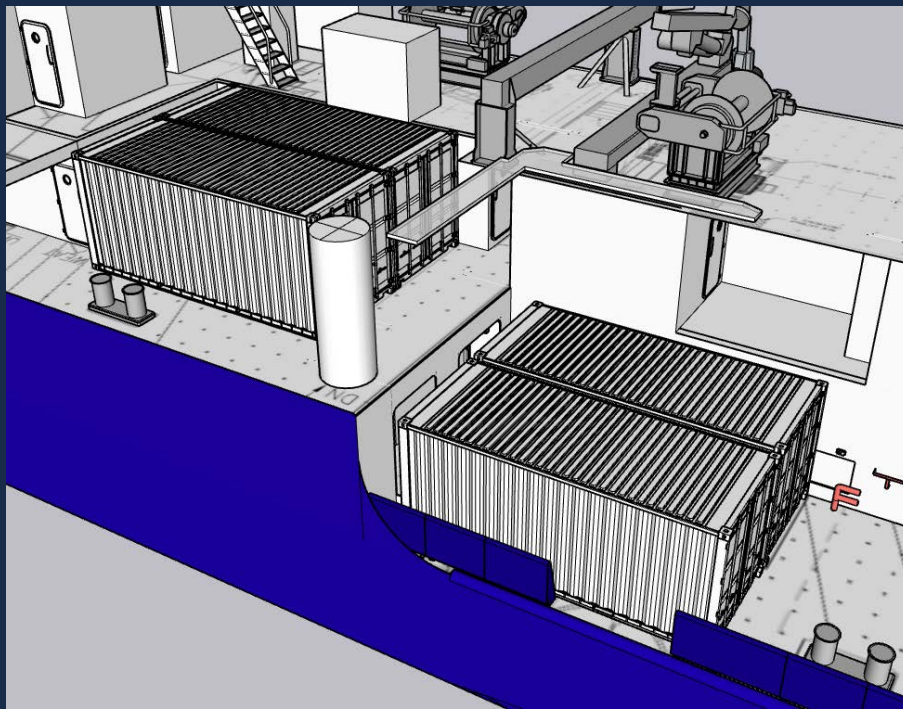


2'x2' deck socket pattern

- Standard across UNOLS vessels
- 1" x 8 sockets on deck
- 1/2" x 13 sockets in labs

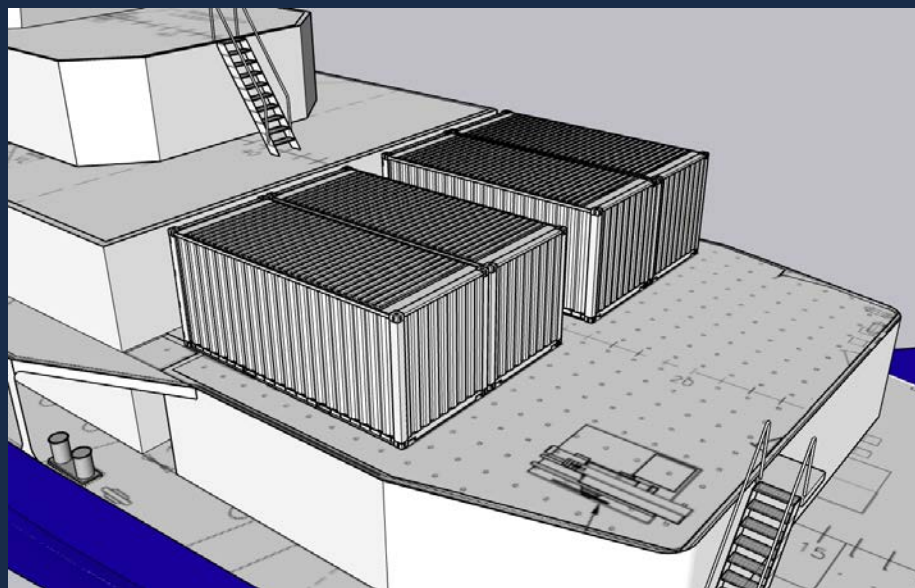
1'x6" lab bench socket pattern

- 1/4" x 20 sockets on benches
 - No drilling allowed on benches
 - Drilling permitted on nesting tables



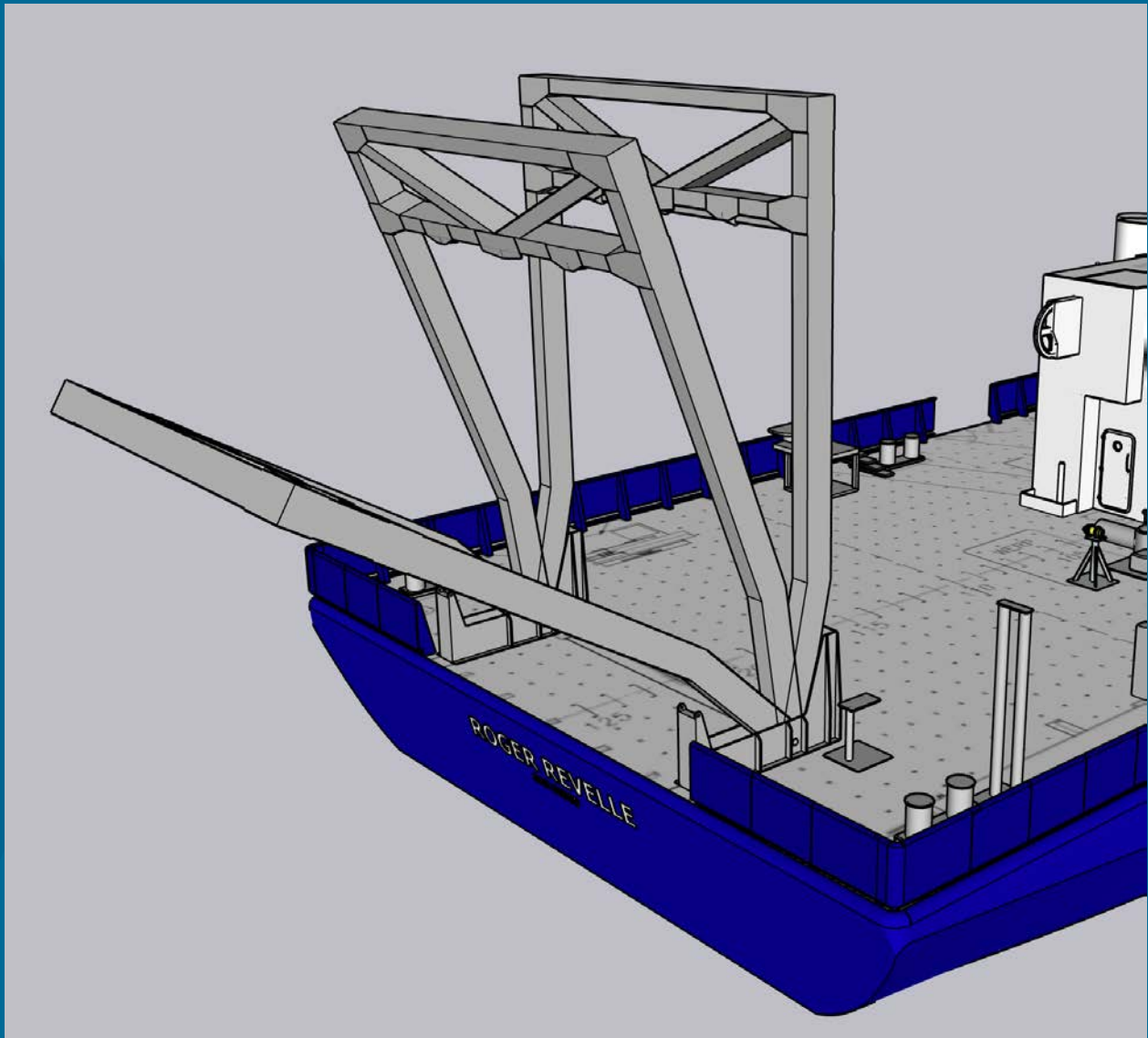
Space for 4 shipping containers (20' long) on aft port side

- 2 on main deck, 2 on 01 deck
- Ship's workboat can be stacked on top of a container
- Container doors on main deck inboard position cannot be fully opened



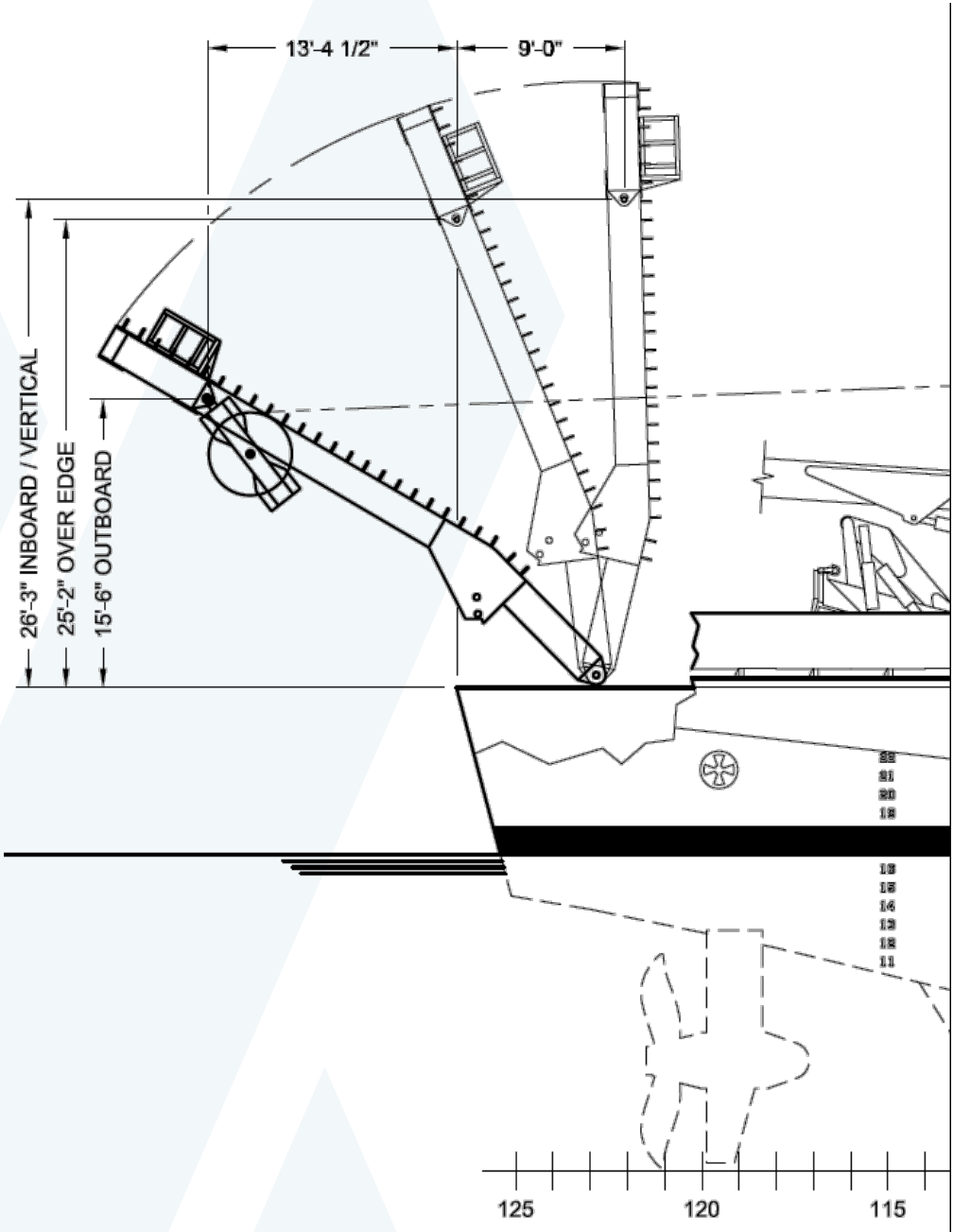
Space for 4 shipping containers (20' long) on forward 02 deck

A-FRAME

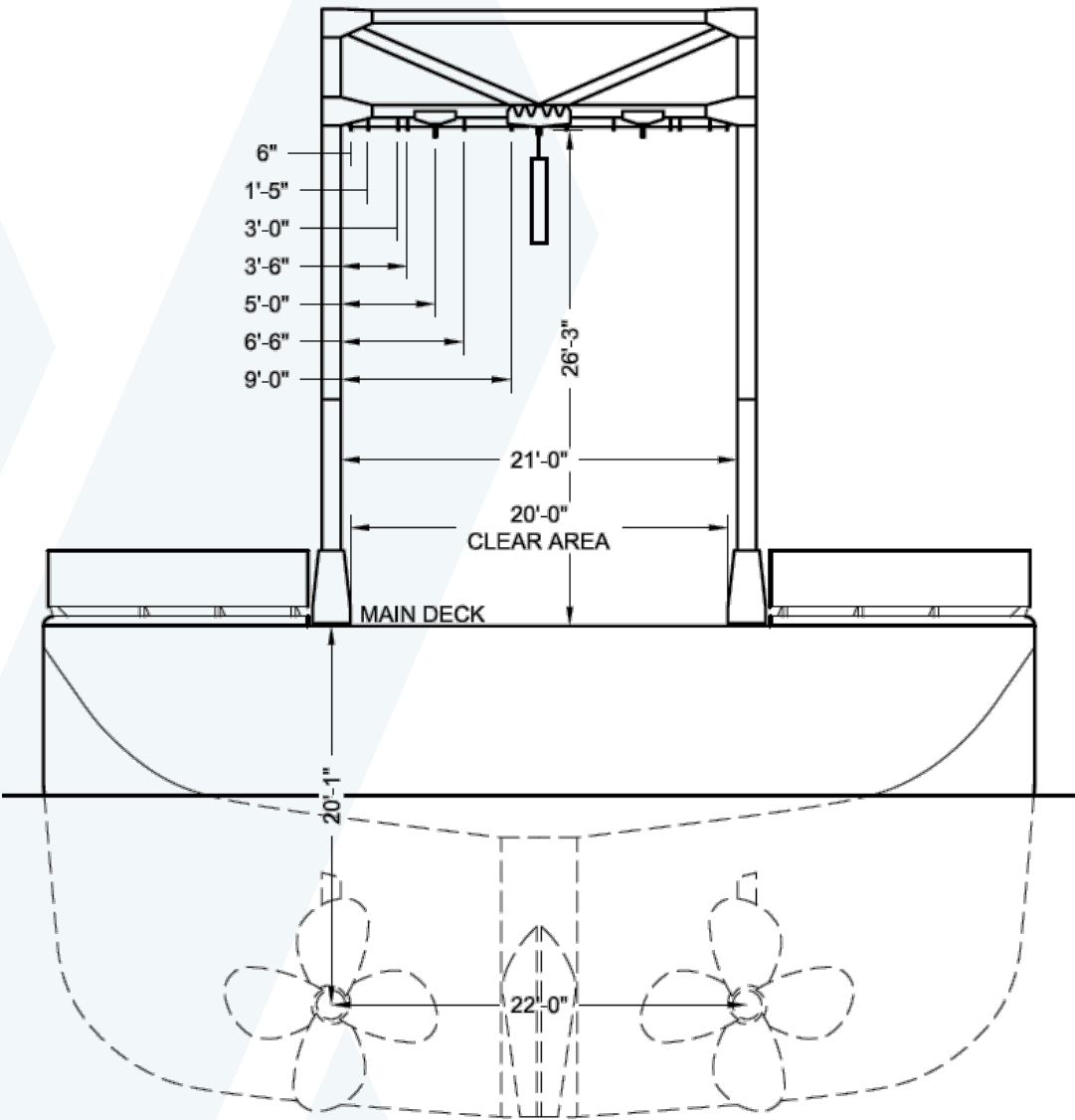


- Safe working load 21,500 lbs
- Three main positions to hang blocks or chain (port, starboard, centerline)
- Multiple additional hanging positions across width of frame
- 9/16" trawl wire and 0.680 electro-mechanical wire led from winch room

A-FRAME PROFILE VIEW

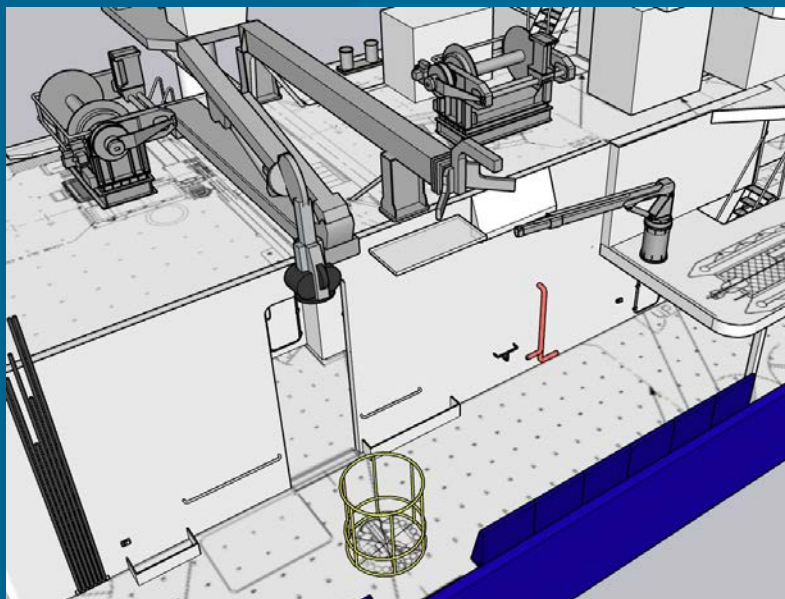
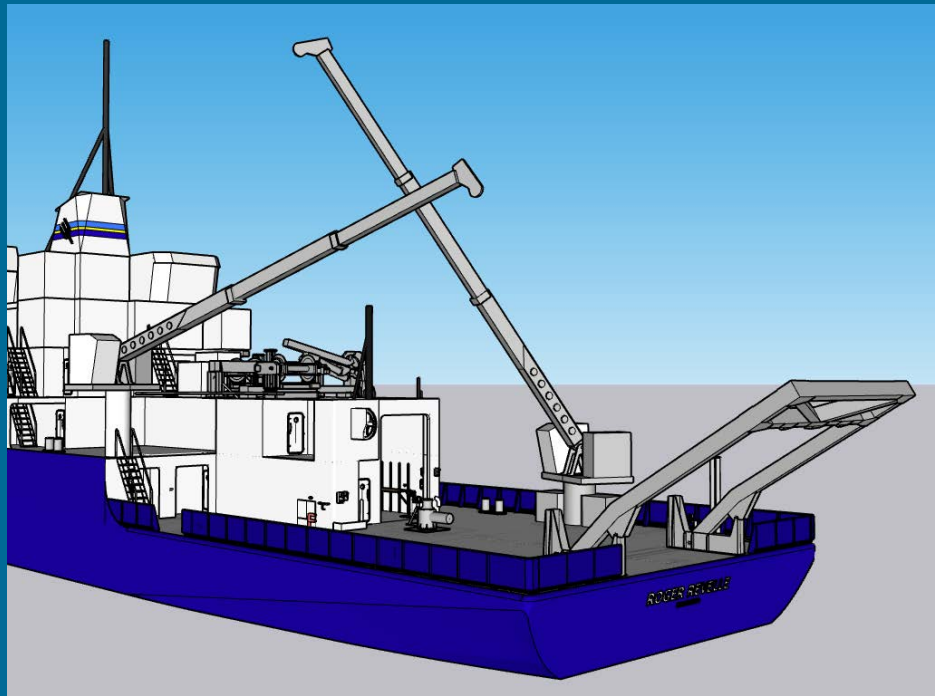


A-FRAME SECTION VIEW



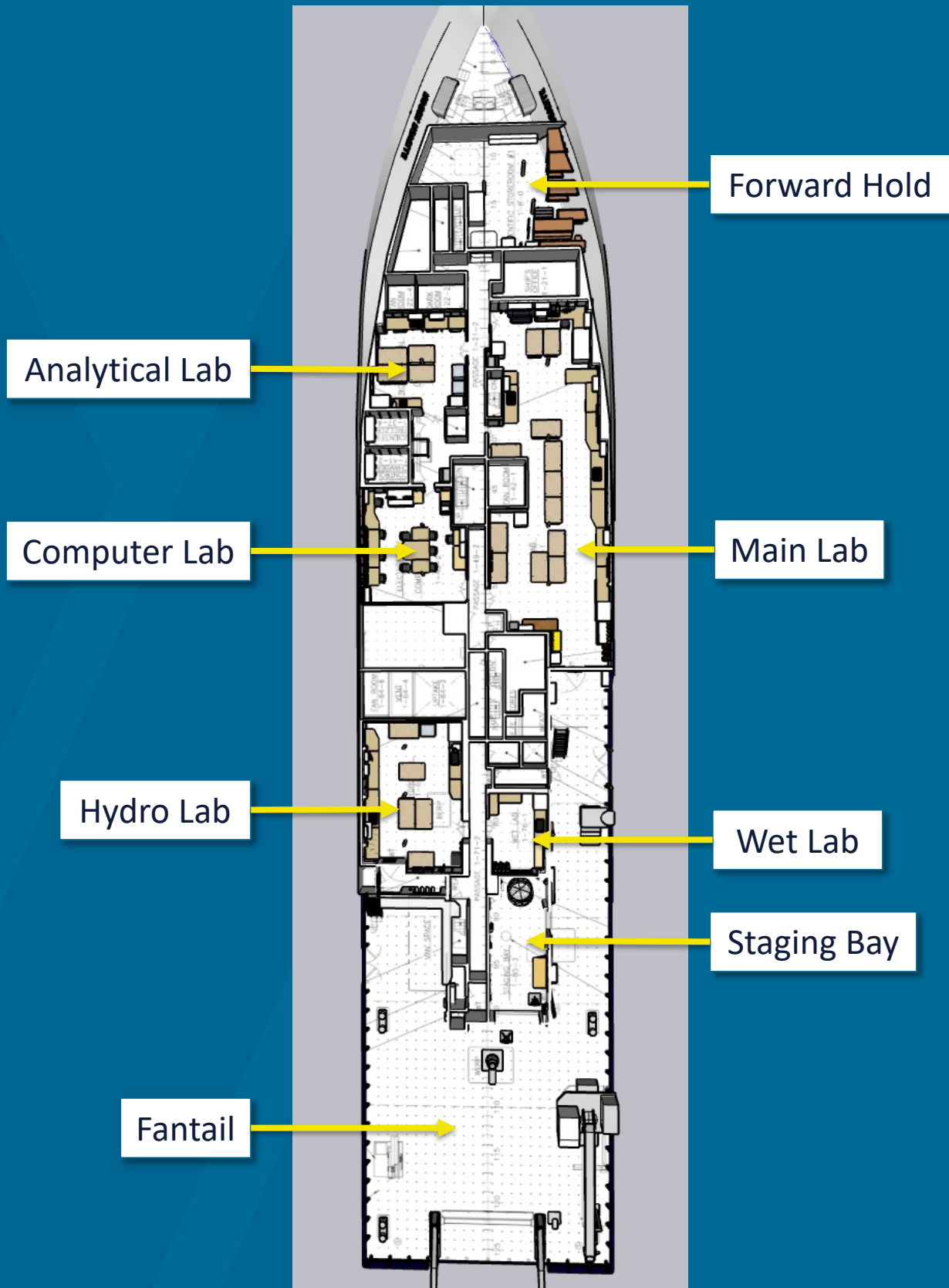
*A-Frame in inboard/vertical position

CRANES AND BOOMS

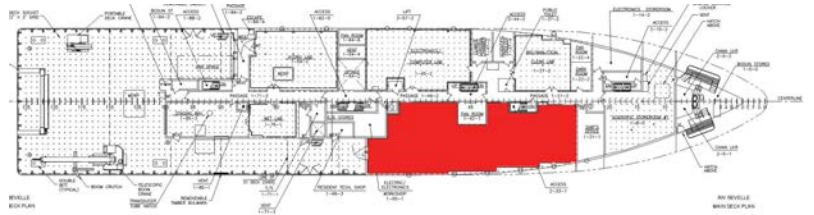


- Main ship cranes on the starboard main deck and port 01 deck
- Portable HiAB crane, which can be bolted on the forward 02 deck or main deck
- Automated CTD launch and recovery system on starboard side with 0.322 electro-mechanical wire
- Squirt boom on starboard side with 0.322 electro-mechanical wire
- Small ship crane on starboard 01 deck, which can be spooled with synthetic line for tagging instruments

OVERHEAD VIEW OF MAIN DECK



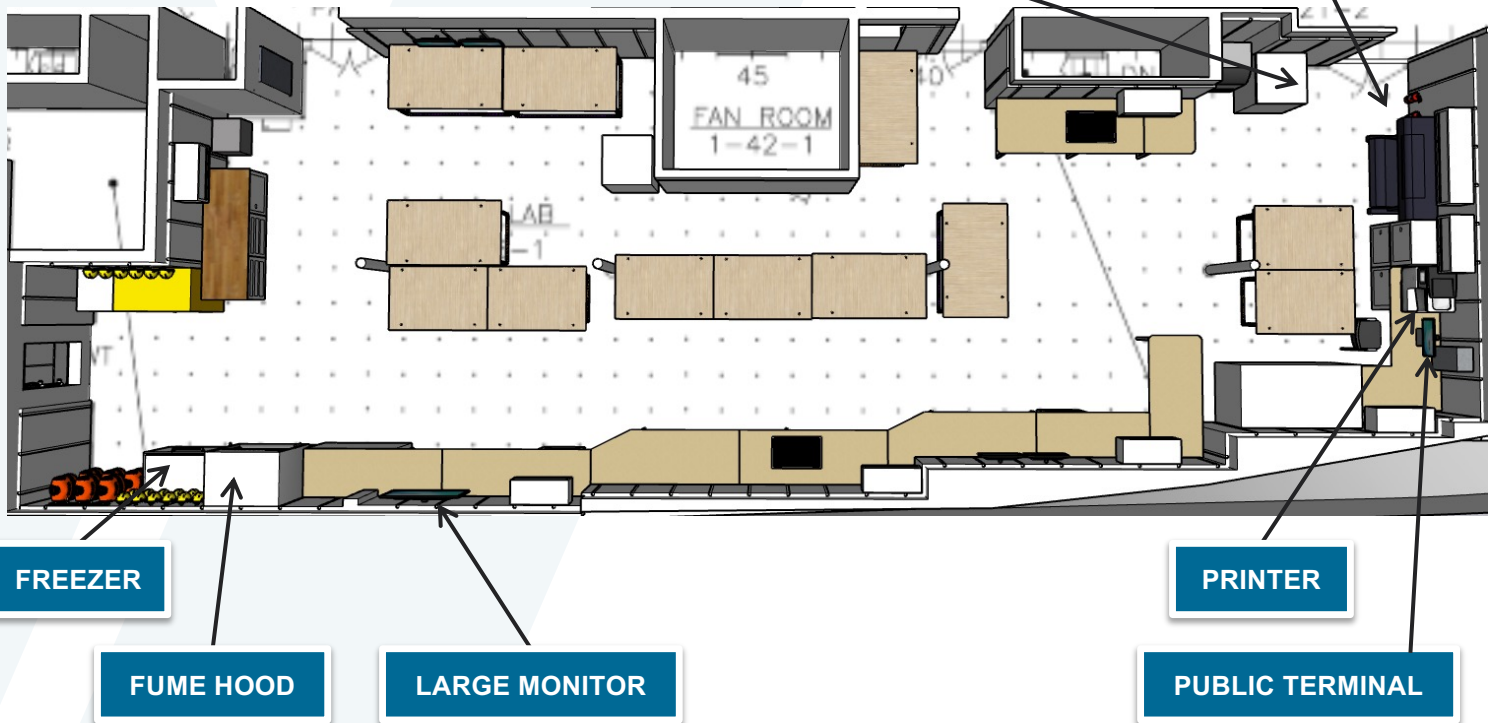
MAIN LAB OVERHEAD VIEW



MAINTAIN 48" WALKWAY FOR PALLET JACK ACCESS TO FORWARD HOLD

LARGE FORMAT PRINTER

-80°C CHEST FREEZER AND ICE MACHINE



FREEZER

FUME HOOD

LARGE MONITOR

PRINTER

PUBLIC TERMINAL

- 3 sets of nesting tables
- 1 fume hood
- 2 sinks
- Public terminal
- uncontaminated seawater hookup at inboard sink (1/2" barbs)

- -80°C chest freezer (-60 to -80°C; 3 cu/ft)
- Standard chest freezer (14.8 cu/ft)
- Science-use-only ice machine
- Large presentation monitor
- 5 virtual machine monitors
- Laser printer and large format printer

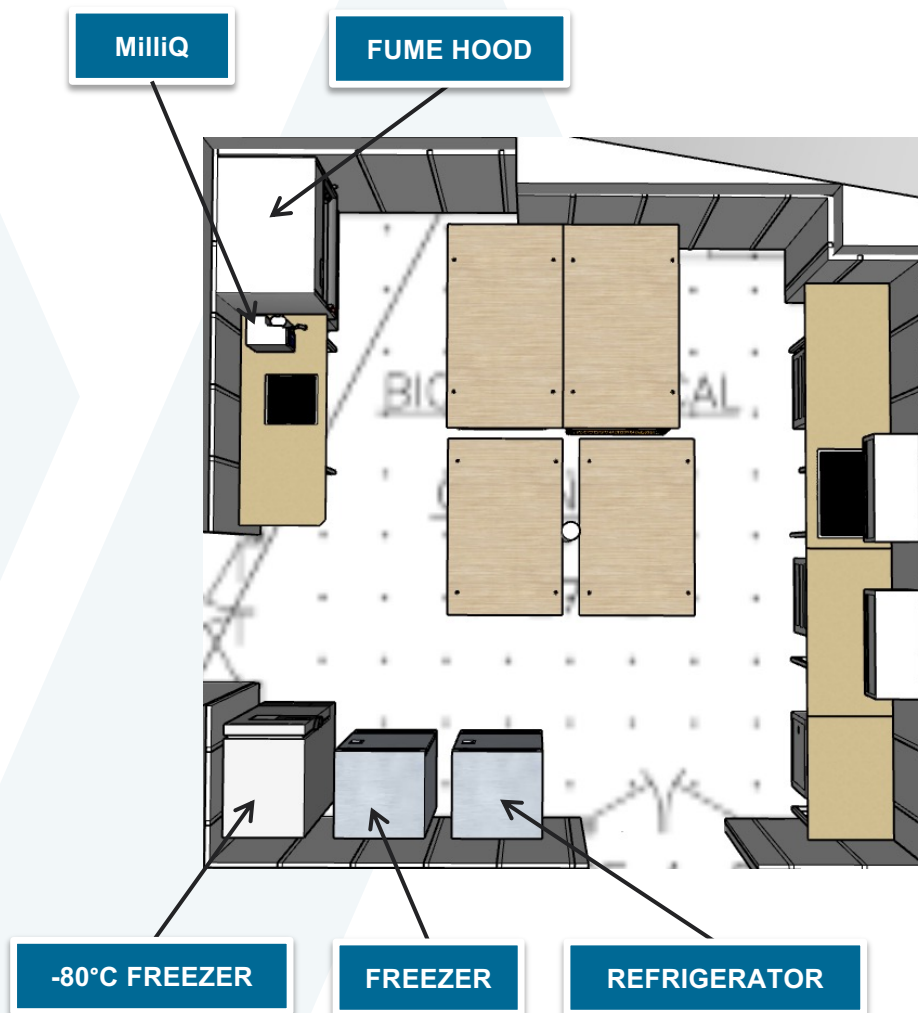
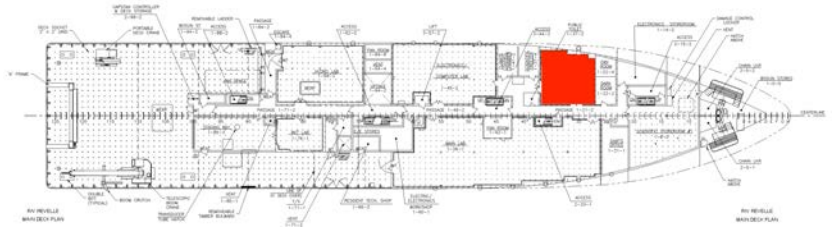
MAIN LAB PORT PERSPECTIVE VIEW



MAIN LAB STARBOARD PERSPECTIVE VIEW

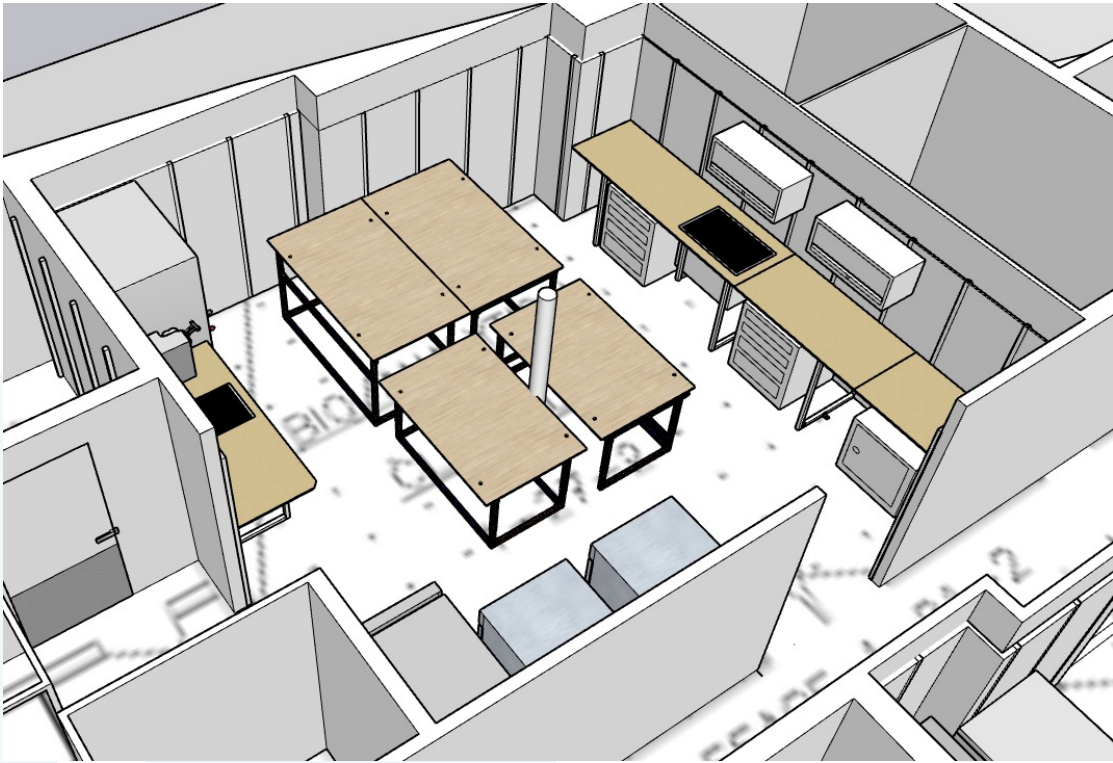


ANALYTICAL LAB OVERHEAD VIEW

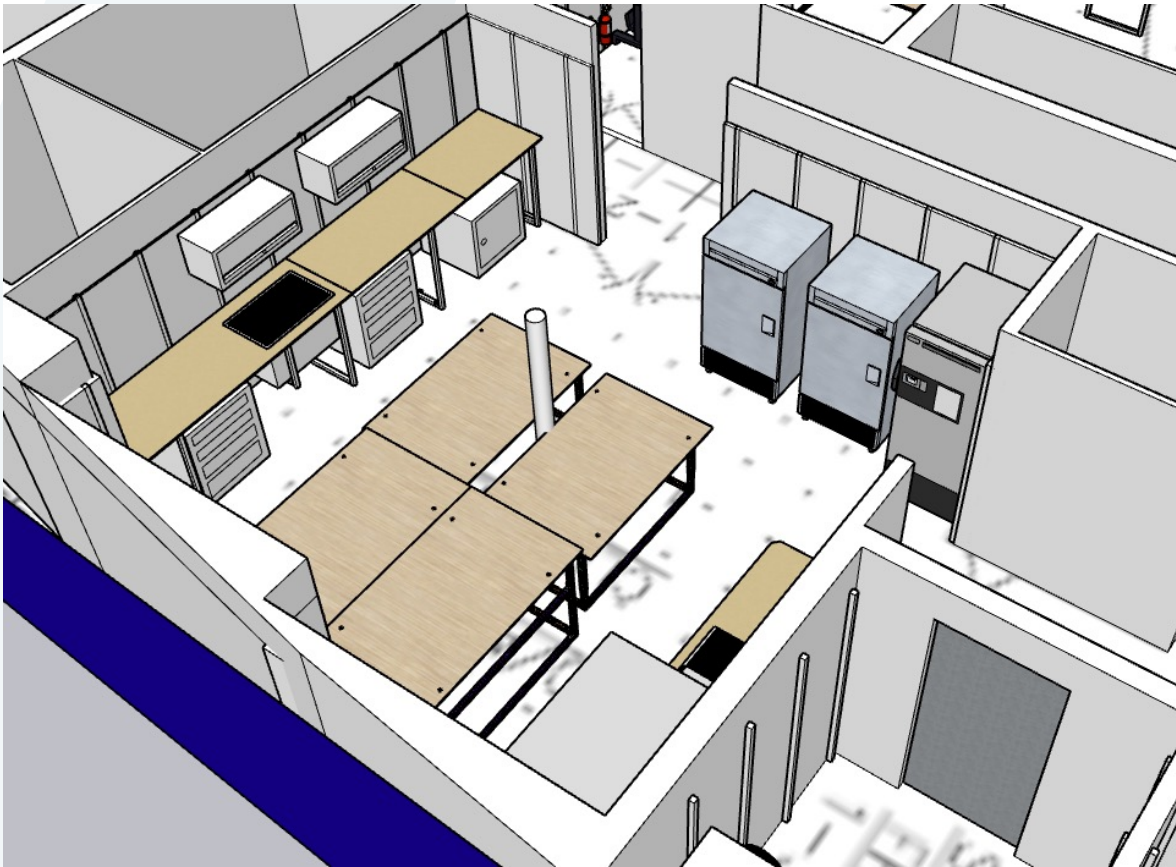


- 1 fume hood
- 2 sinks
- Standup -80°C freezer (-50 to -86°C; 360L)
- Standup refrigerator (37 to 40°F; 10 cu/ft)
- Standup freezer (-5 to 0°F; 10 cu/ft)
- 1 set of nesting tables
- MilliQ water station

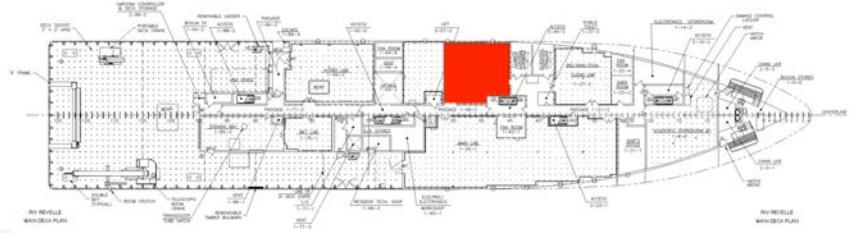
ANALYTICAL LAB PORT PERSPECTIVE VIEW



ANALYTICAL LAB STARBOARD PERSPECTIVE VIEW



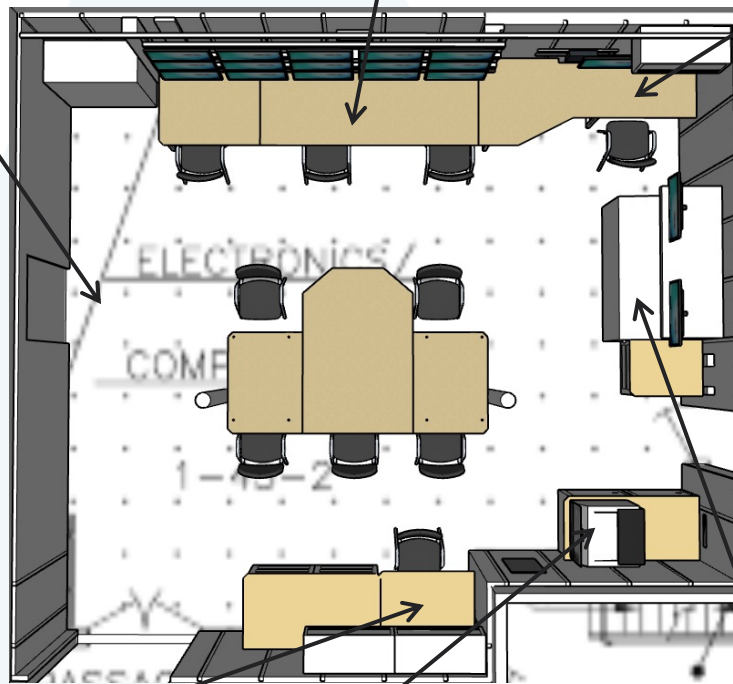
COMPUTER LAB OVERHEAD VIEW



ACCESS TO DATA CENTER

15 MONITOR ARRAY

CR DESK



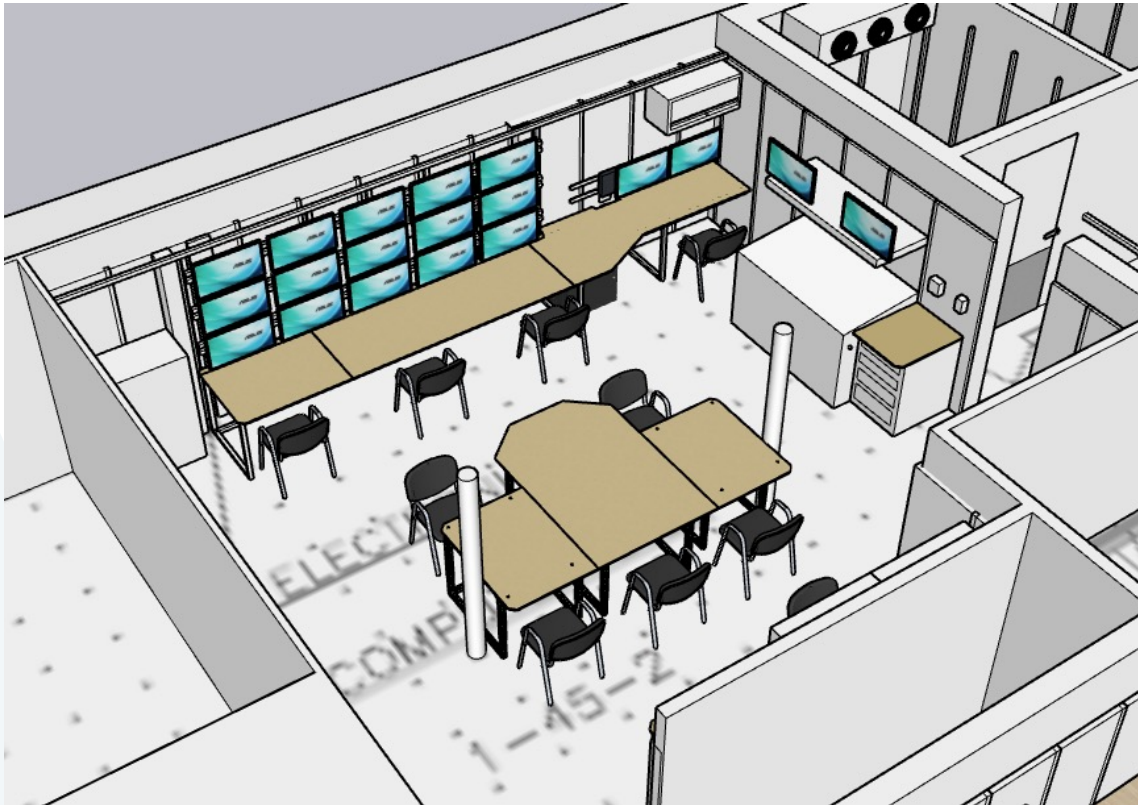
RESTECH DESK

PRINTER

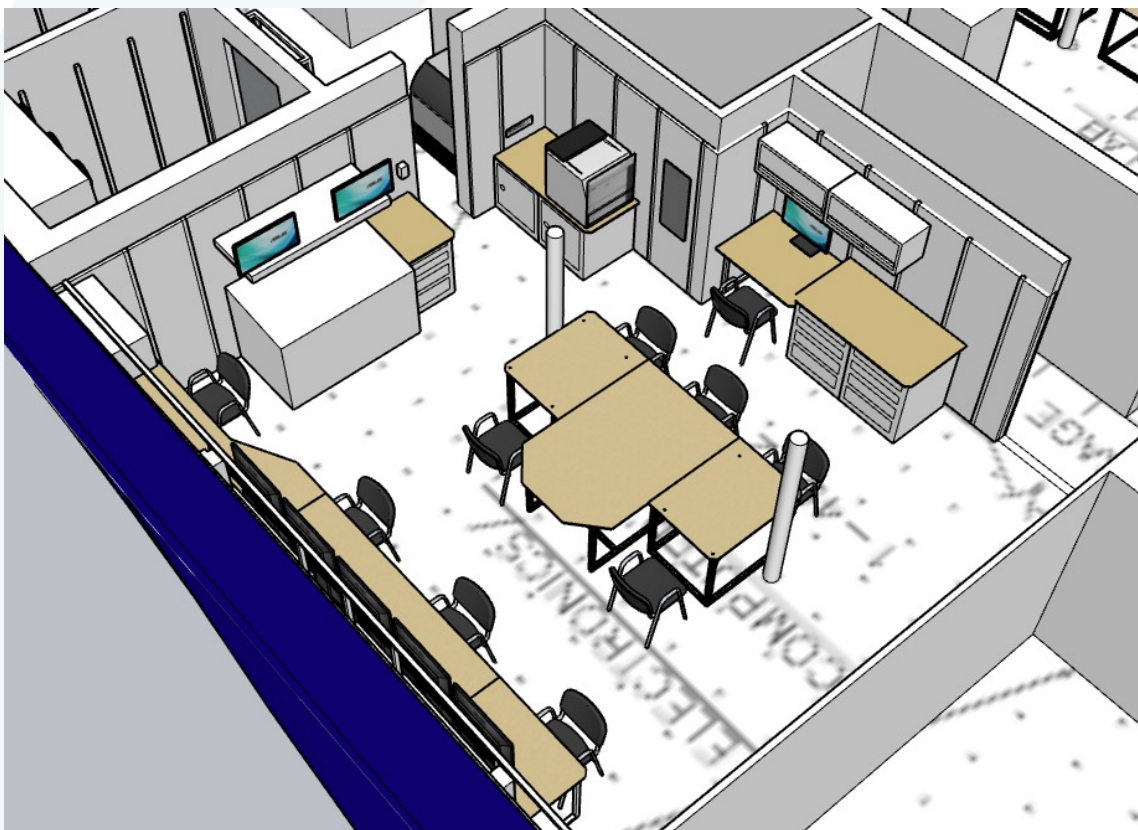
HYDRO/TRACTION WINCH CONTROLS

- 15 monitor virtual machine display
- Nesting and height adjustable island
- Laser printer
- Hydro/Traction winch controls

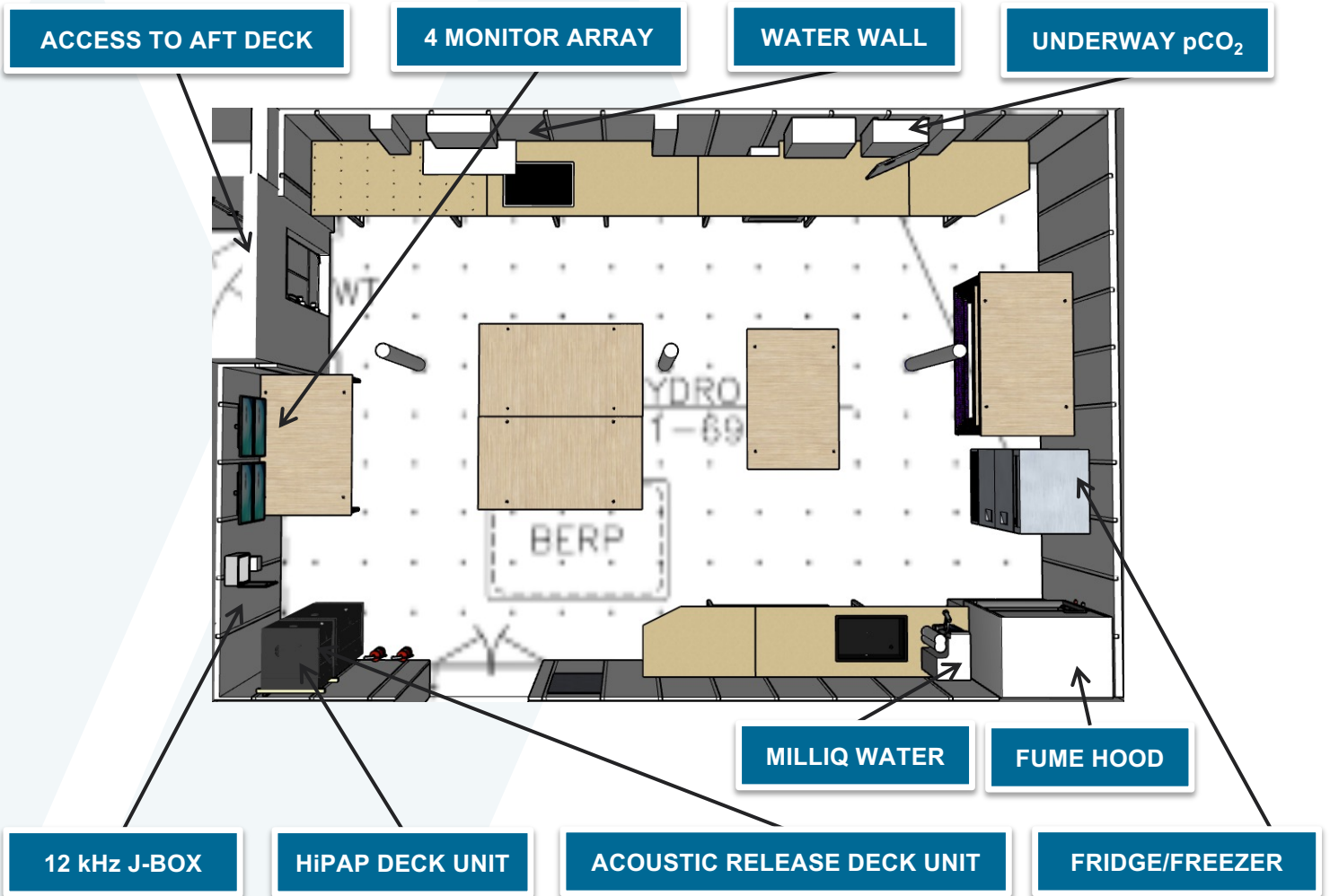
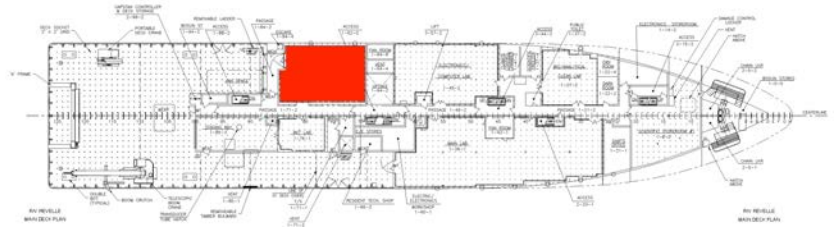
COMPUTER LAB PORT PERSPECTIVE VIEW



COMPUTER LAB STARBOARD PERSPECTIVE VIEW



HYDRO LAB OVERHEAD VIEW



- 4 monitor virtual machine display
- 1 fume hood
- Water wall with TSG, transmissometer, dissolved oxygen, fluorometer, and de-bubbler
- MilliQ water station
- HiPAP and acoustic release deck units
- 2 sinks both with uncontaminated seawater hookups (1/2" barbs)
- Underway pCO₂ system
- Standup fridge (35 to 40°F; 6 cu/ft) and freezer(-5 to 0 °F; 3 cu/ft) combo
- 12 kHz transducer J-box
- 2 sets of nesting tables

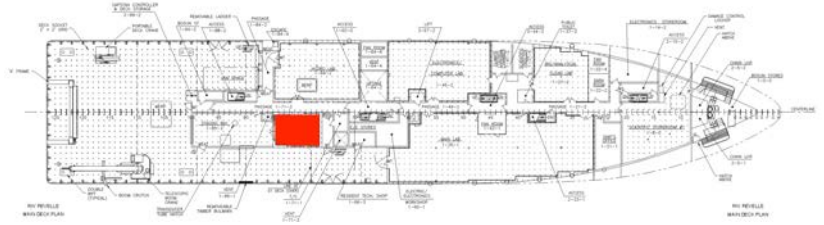
HYDRO LAB PORT PERSPECTIVE VIEW



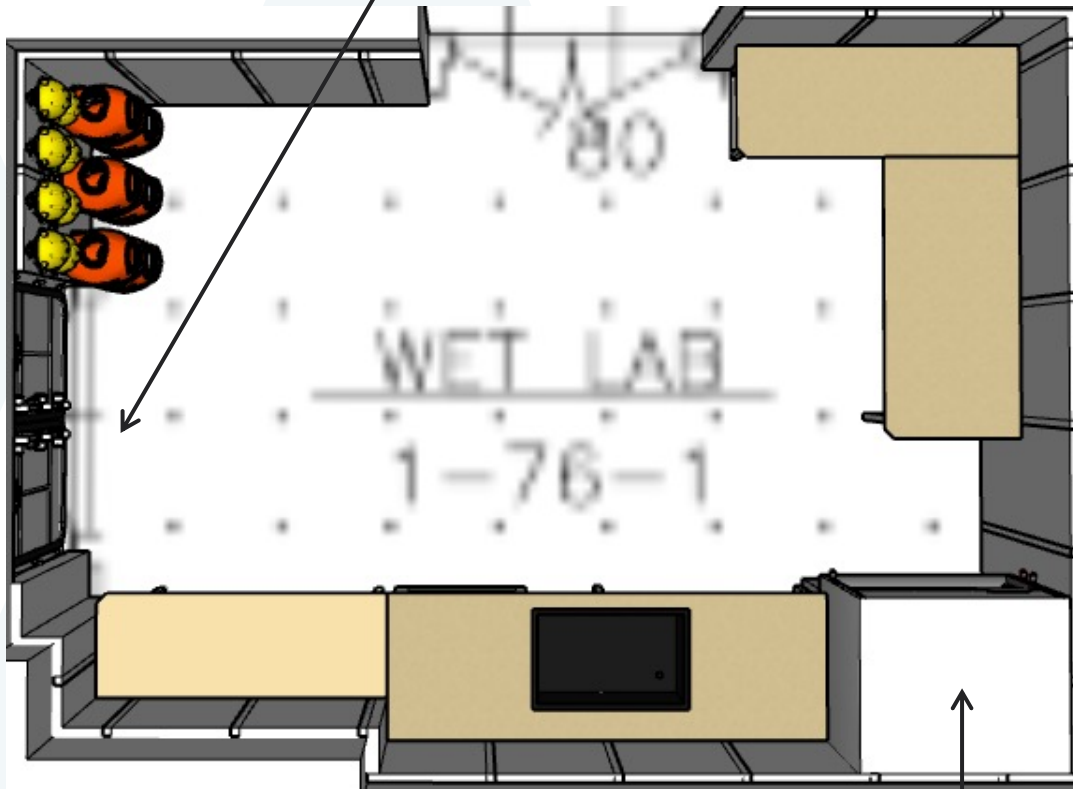
HYDRO LAB STARBOARD PERSPECTIVE VIEW



WET LAB OVERHEAD VIEW



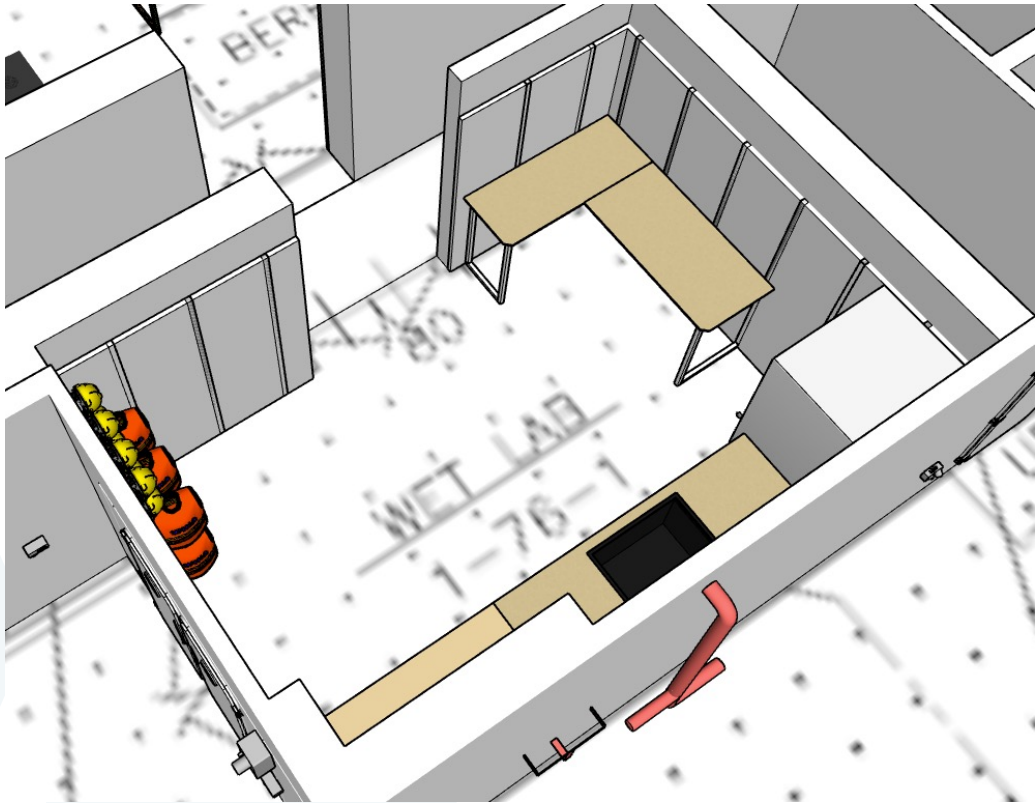
ACCESS TO STAGING BAY



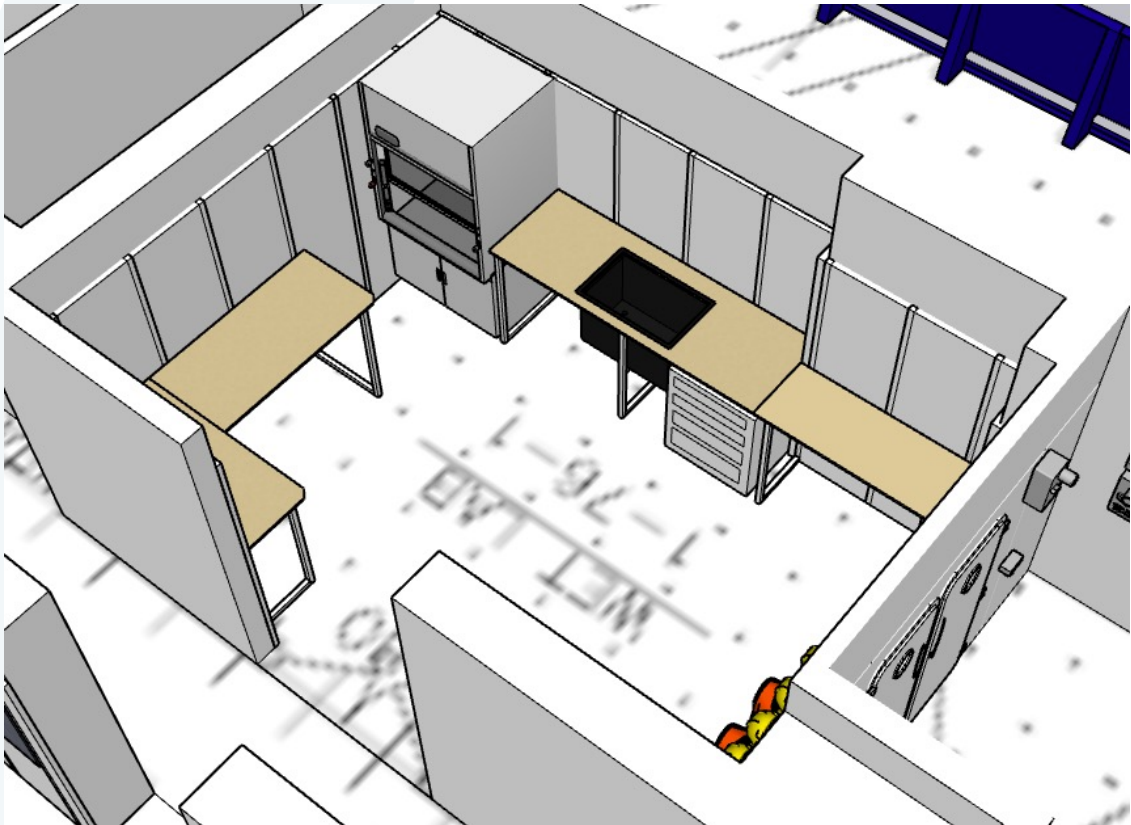
FUME HOOD

- 1 fume hood
- 1 sink with uncontaminated seawater hookup (1/2" barbs)

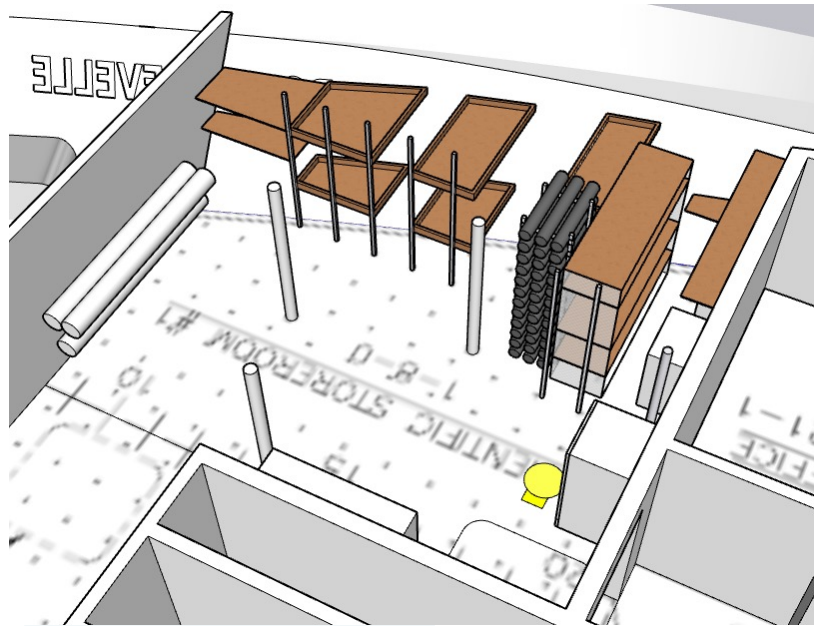
WET LAB PORT PERSPECTIVE VIEW



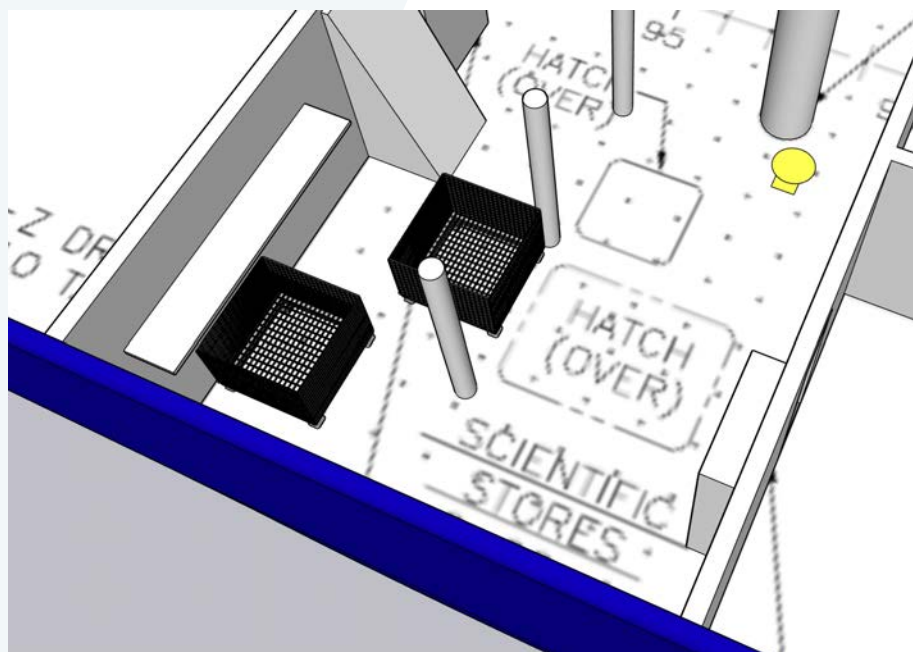
WET LAB STARBOARD PERSPECTIVE VIEW



FORWARD SCIENCE HOLD STARBOARD PERSPECTIVE VIEW



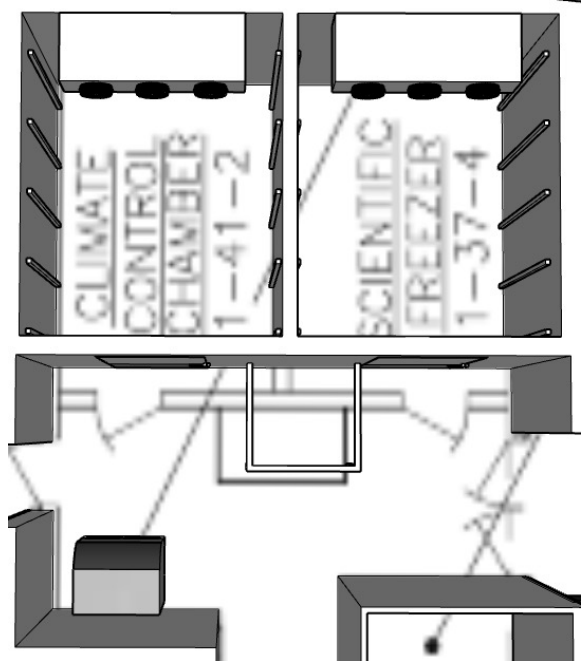
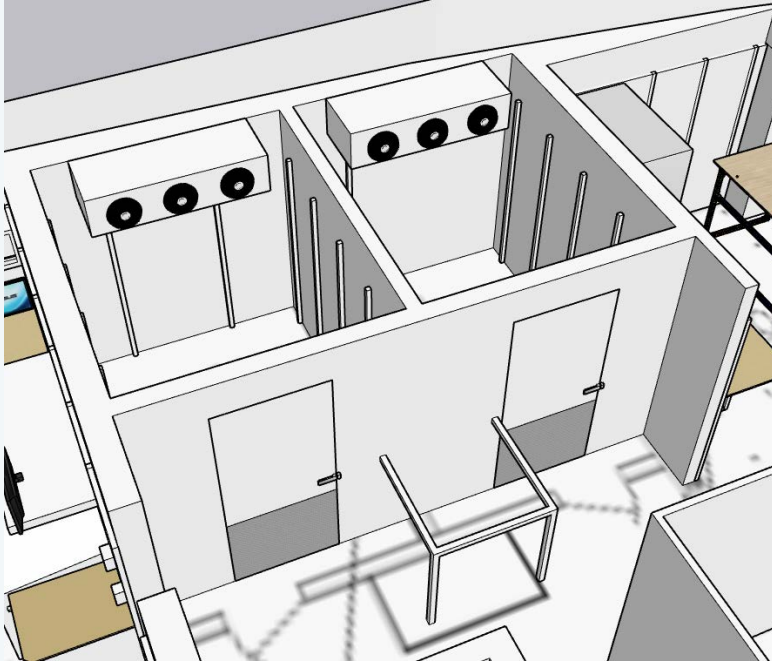
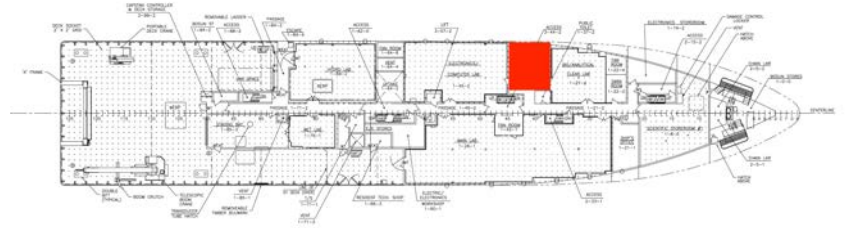
AFT SCIENCE HOLD PORT PERSPECTIVE VIEW



Note Storerooms are limited in available space as shipboard instruments, deck hardware, etc. utilize this area. Contact ResTech group for information regarding your specific storage needs.

- Forward science hold located on main deck
- Aft science hold located on 1st platform with overhead hatch to main deck
- Standup refrigerator or freezer in forward science hold (17 cu/ft)

WALK-IN COLD ROOMS



- 2 large walk-in climate control rooms
- Approximately 10'x7' each
- Temperatures can be set as low as -18°C
- Science-use-only ice machine in vestibule
- Unistrut on bulkheads, which shelves can be mounted to

REFRIGERATION SUMMARY

Main Lab:

- Chest freezer (14.8 cu/ft)
- -80°C chest freezer (-60 to -80°C; 3 cu/ft)
- Science-use-only ice machine

Analytical Lab:

- -80°C standup freezer (-50 to -86°C; 12.7 cu/ft)
- Standup refrigerator (37 to 40°F; 10 cu/ft)
- Standup freezer (-5 to 0°F; 10 cu/ft)

Hydro Lab:

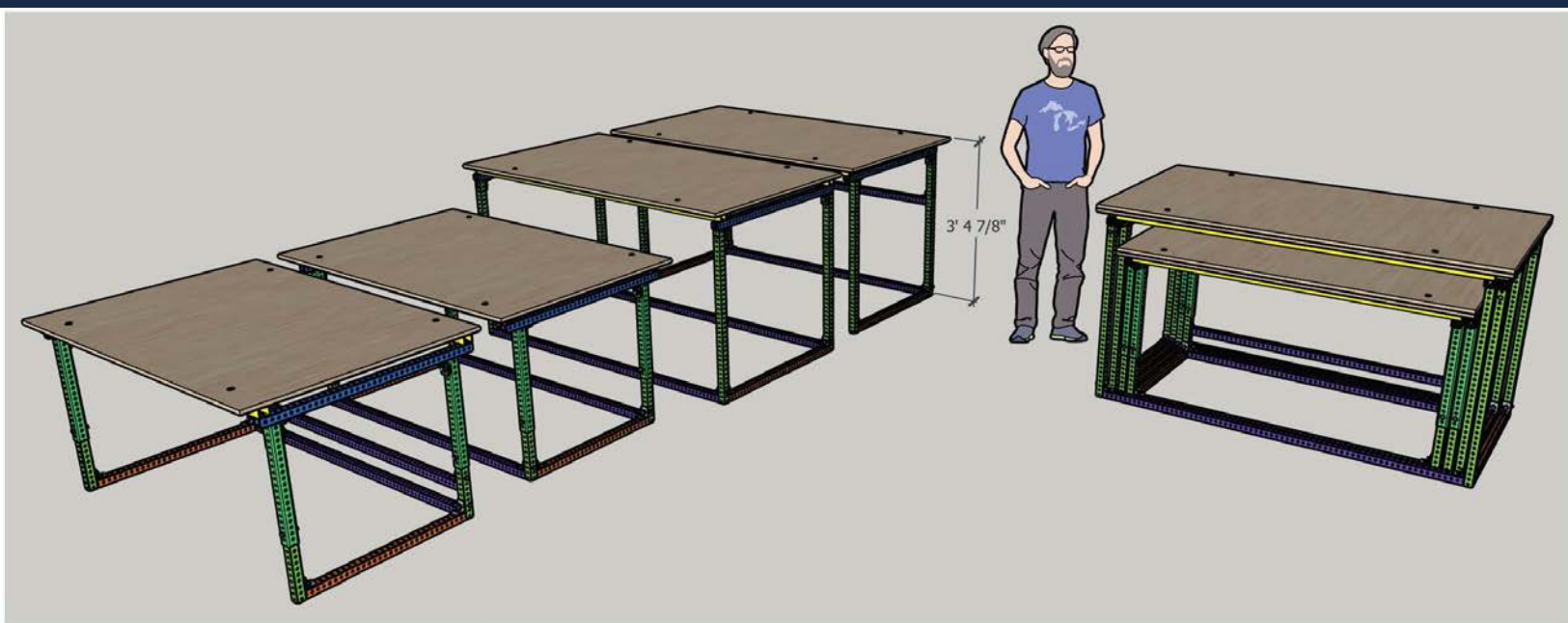
- Standup refrigerator (35 to 40°F; 6 cu/ft) and freezer (-5 to 0 °F; 3 cu/ft) combo

Main Passageway:

- 2 walk in climate control rooms (-18°C to room temp; approx. 10'x7' each)
- Science-use-only ice machine in vestibule

Forward Hold:

- Standup refrigerator or freezer (17 cu/ft)



Nesting Tables:

- Each set of 4 nesting tables can be nested to take up the space of just one bench
- 1 set is made up of 2 fixed height benches and 2 adjustable height desks
- Desks can be adjusted to any comfortable height and can be raised to match benches
- Benches are approximately 3'5" tall (same height as perimeter bench tops)
- Bench top area: 6'2"x 3'6"
- Desk top area: 5'4.5"x 3'6"